



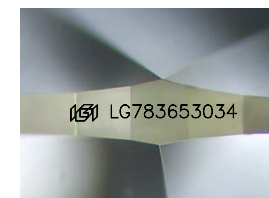
ELECTRONIC COPY

LG783653034
Report verification at igi.org



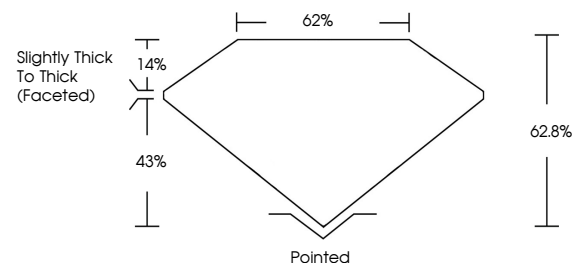
March 20, 2026
IGI Report Number **LG783653034**
Description **LABORATORY GROWN DIAMOND**
Shape and Cutting Style **OVAL BRILLIANT**
Measurements **9.00 X 6.32 X 3.97 MM**

GRADING RESULTS
Carat Weight **1.51 CARAT**
Color Grade **D**
Clarity Grade **VVS 2**

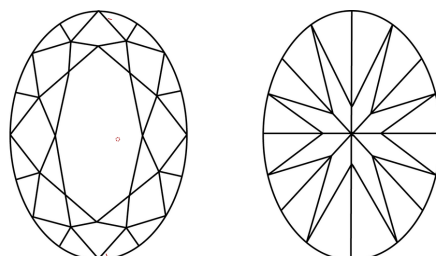


Sample Image Used

PROPORTIONS



CLARITY CHARACTERISTICS



KEY TO SYMBOLS

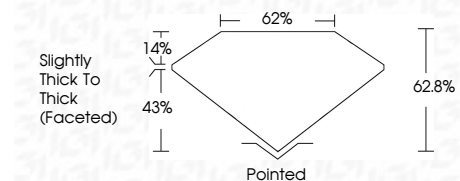
Red symbols indicate internal characteristics.
Green symbols indicate external characteristics.

COLOR

D E F G H I J Faint Very Light Light

CLARITY

FL	IF	VVS ¹⁻²	VS ¹⁻²	SI ¹⁻²	I ¹⁻³
Flawless	Internally Flawless	Very Very Slightly Included	Very Slightly Included	Slightly Included	Included



ADDITIONAL GRADING INFORMATION

Polish **EXCELLENT**
Symmetry **EXCELLENT**
Fluorescence **NONE**
Inscription(s) **IGI LG783653034**
Comments: This Laboratory Grown Diamond was created by Chemical Vapor Deposition (CVD) growth process. Type IIa



IGI



March 20, 2026
IGI Report No LG783653034
OVAL BRILLIANT
9.00 X 6.32 X 3.97 MM
Carat Weight 1.51 CARAT
Color Grade D
Clarity Grade VVS 2
Depth 62.8%
Table 62%
Girdle Slightly Thick To Thick (Faceted)
Culet Pointed
Polish EXCELLENT
Symmetry EXCELLENT
Fluorescence NONE
Inscription(s) IGI LG783653034

Comments: This Laboratory Grown Diamond was created by Chemical Vapor Deposition (CVD) growth process. Type IIa