



ELECTRONIC COPY

LG783648803
Report verification at igi.org

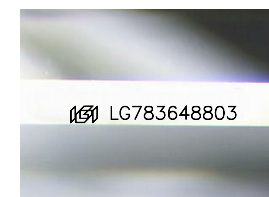


April 10, 2026
IGI Report Number **LG783648803**
Description **LABORATORY GROWN DIAMOND**
Shape and Cutting Style **CUT CORNERED
RECTANGULAR MODIFIED
BRILLIANT**

Measurements **8.00 X 5.77 X 3.68 MM**

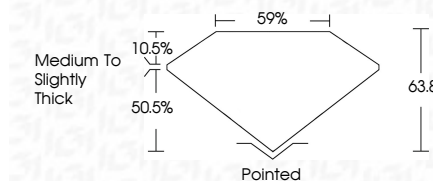
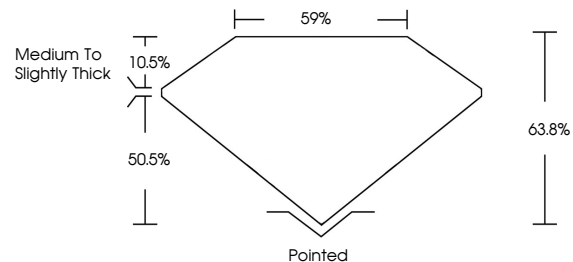
GRADING RESULTS

Carat Weight **1.41 CARAT**
Color Grade **D**
Clarity Grade **FLAWLESS**



Sample Image Used

PROPORTIONS



April 10, 2026
IGI Report Number **LG783648803**
Description **LABORATORY GROWN DIAMOND**
Shape and Cutting Style **CUT CORNERED RECTANGULAR
MODIFIED BRILLIANT**
Measurements **8.00 X 5.77 X 3.68 MM**

GRADING RESULTS

Carat Weight **1.41 CARAT**
Color Grade **D**
Clarity Grade **FLAWLESS**

ADDITIONAL GRADING INFORMATION

Polish **EXCELLENT**
Symmetry **EXCELLENT**
Fluorescence **NONE**
Inscription(s) **IGI LG783648803**

Comments: As Grown - No indication of post-growth treatment.
This Laboratory Grown Diamond was created by High Pressure High Temperature (HPHT) growth process. Type II

COLOR

D E F G H I J Faint Very Light Light

CLARITY

FL	IF	VS ¹⁻²	VS ¹⁻²	SI ¹⁻²	I ¹⁻³
Flawless	Internally Flawless	Very Very Slightly Included	Very Slightly Included	Slightly Included	Included

ADDITIONAL GRADING INFORMATION

Polish **EXCELLENT**
Symmetry **EXCELLENT**
Fluorescence **NONE**
Inscription(s) **IGI LG783648803**
Comments: As Grown - No indication of post-growth treatment.
This Laboratory Grown Diamond was created by High Pressure High Temperature (HPHT) growth process. Type II



IGI



April 10, 2026
IGI Report No. LG783648803
CUT CORNERED RECT. MODIFIED BRILLIANT
8.00 X 5.77 X 3.68 MM
Carat Weight 1.41 CARAT
Color Grade D
Clarity Grade FLAWLESS
Depth 63.8%
Table 59%
Girdle Medium to Slightly Thick
Culet Pointed
Polish EXCELLENT
Symmetry EXCELLENT
Fluorescence NONE
Inscription(s) IGI LG783648803

Comments: As Grown - No indication of post-growth treatment.
This Laboratory Grown Diamond was created by High Pressure High Temperature (HPHT) growth process. Type II