



ELECTRONIC COPY

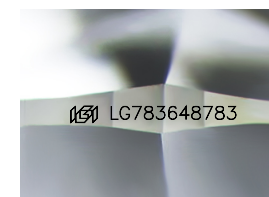
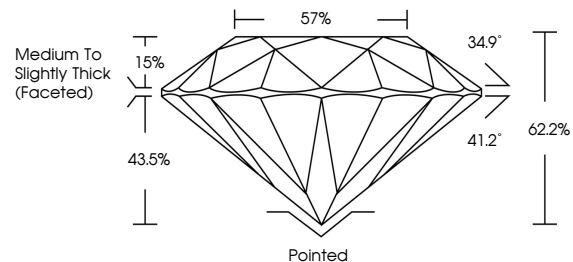
LG783648783
Report verification at igi.org



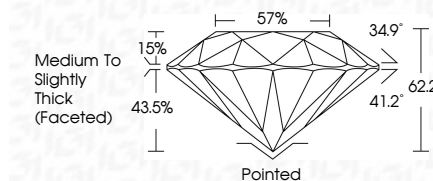
April 10, 2026
IGI Report Number LG783648783
Description LABORATORY GROWN DIAMOND
Shape and Cutting Style ROUND BRILLIANT
Measurements 8.10 - 8.15 X 5.05 MM
GRADING RESULTS
Carat Weight 2.04 CARATS
Color Grade D
Clarity Grade FLAWLESS
Cut Grade IDEAL

April 10, 2026
IGI Report Number LG783648783
Description LABORATORY GROWN DIAMOND
Shape and Cutting Style ROUND BRILLIANT
Measurements 8.10 - 8.15 X 5.05 MM
GRADING RESULTS
Carat Weight 2.04 CARATS
Color Grade D
Clarity Grade FLAWLESS
Cut Grade IDEAL

PROPORTIONS



Sample Image Used



ADDITIONAL GRADING INFORMATION
Polish EXCELLENT
Symmetry EXCELLENT
Fluorescence NONE
Inscription(s) IGI LG783648783

Comments: As Grown - No indication of post-growth treatment. This Laboratory Grown Diamond was created by High Pressure High Temperature (HPHT) growth process. Type II

COLOR

D E F G H I J Faint Very Light Light

CLARITY

FL IF VS 1-2 VS 1-2 SI 1-2 I 1-3
Flawless Internally Flawless Very Very Slightly Included Very Slightly Included Slightly Included Included

ADDITIONAL GRADING INFORMATION

Polish EXCELLENT
Symmetry EXCELLENT
Fluorescence NONE
Inscription(s) IGI LG783648783
Comments: As Grown - No indication of post-growth treatment. This Laboratory Grown Diamond was created by High Pressure High Temperature (HPHT) growth process. Type II



IGI



April 10, 2026
IGI Report No LG783648783
ROUND BRILLIANT
8.10 - 8.15 X 5.05 MM
2.04 CARATS
D
FLAWLESS
IDEAL
62.2%
57%
Medium To Slightly Thick (Faceted)
Pointed
EXCELLENT
EXCELLENT
NONE
IGI LG783648783
Comments: As Grown - No indication of post-growth treatment. This Laboratory Grown Diamond was created by High Pressure High Temperature (HPHT) growth process. Type II