



ELECTRONIC COPY

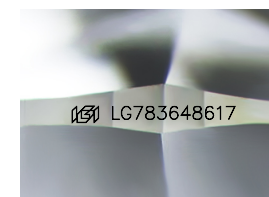
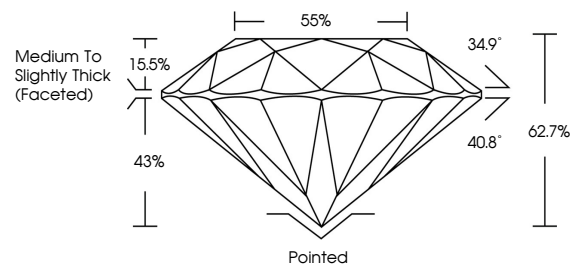
LG783648617
Report verification at igi.org



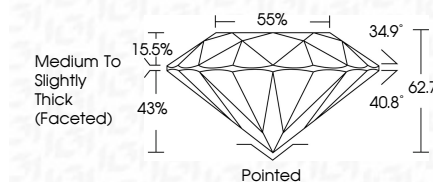
April 7, 2026
IGI Report Number **LG783648617**
Description **LABORATORY GROWN DIAMOND**
Shape and Cutting Style **ROUND BRILLIANT**
Measurements **7.98 - 8.04 X 5.03 MM**
GRADING RESULTS
Carat Weight **2.00 CARATS**
Color Grade **E**
Clarity Grade **VVS 1**
Cut Grade **EXCELLENT**

April 7, 2026
IGI Report Number **LG783648617**
Description **LABORATORY GROWN DIAMOND**
Shape and Cutting Style **ROUND BRILLIANT**
Measurements **7.98 - 8.04 X 5.03 MM**
GRADING RESULTS
Carat Weight **2.00 CARATS**
Color Grade **E**
Clarity Grade **VVS 1**
Cut Grade **EXCELLENT**

PROPORTIONS



Sample Image Used



ADDITIONAL GRADING INFORMATION

Polish **EXCELLENT**
Symmetry **EXCELLENT**
Fluorescence **NONE**
Inscription(s) **IGI LG783648617**

Comments: This Laboratory Grown Diamond was created by Chemical Vapor Deposition (CVD) growth process. Type IIa

ADDITIONAL GRADING INFORMATION

Polish **EXCELLENT**
Symmetry **EXCELLENT**
Fluorescence **NONE**
Inscription(s) **IGI LG783648617**
Comments: This Laboratory Grown Diamond was created by Chemical Vapor Deposition (CVD) growth process. Type IIa

COLOR

D E F G H I J Faint Very Light Light

CLARITY

FL	IF	VVS ¹⁻²	VS ¹⁻²	SI ¹⁻²	I ¹⁻³
Flawless	Internally Flawless	Very Very Slightly Included	Very Slightly Included	Slightly Included	Included



IGI



April 7, 2026
IGI Report No LG783648617
ROUND BRILLIANT
7.98 - 8.04 X 5.03 MM
2.00 CARATS
E
VVS 1
EXCELLENT
62.7%
85%
Medium To Slightly Thick (Faceted)
Pointed
EXCELLENT
EXCELLENT
NONE
IGI LG783648617
Comments: This Laboratory Grown Diamond was created by Chemical Vapor Deposition (CVD) growth process. Type IIa