



ELECTRONIC COPY

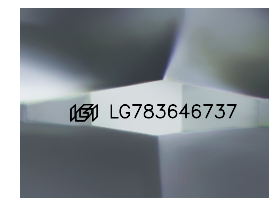
LG783646737
Report verification at igi.org



March 27, 2026
IGI Report Number **LG783646737**
Description **LABORATORY GROWN DIAMOND**
Shape and Cutting Style **ROUND BRILLIANT**
Measurements **7.68 - 7.72 X 4.56 MM**

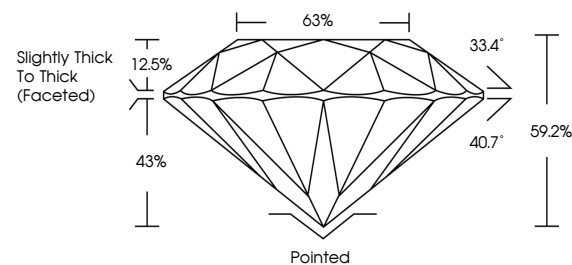
GRADING RESULTS

Carat Weight **1.68 CARAT**
Color Grade **F**
Clarity Grade **VS 1**
Cut Grade **VERY GOOD**

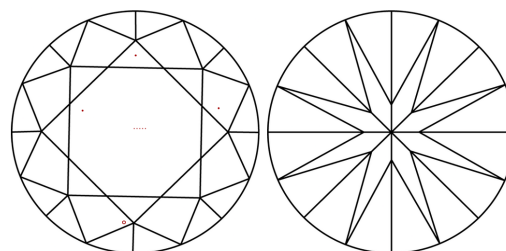


Sample Image Used

PROPORTIONS



CLARITY CHARACTERISTICS



KEY TO SYMBOLS

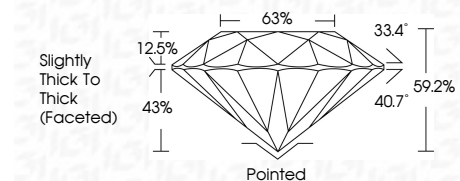
Red symbols indicate internal characteristics.
Green symbols indicate external characteristics.

COLOR

D E F G H I J Faint Very Light Light

CLARITY

FL	IF	VS ¹⁻²	VS ¹⁻²	SI ¹⁻²	I ¹⁻³
Flawless	Internally Flawless	Very Very Slightly Included	Very Slightly Included	Slightly Included	Included



ADDITIONAL GRADING INFORMATION

Polish **VERY GOOD**
Symmetry **EXCELLENT**
Fluorescence **NONE**
Inscription(s) **IGI LG783646737**
Comments: This Laboratory Grown Diamond was created by Chemical Vapor Deposition (CVD) growth process. Type IIa



March 27, 2026
IGI Report No LG783646737
ROUND BRILLIANT
7.68 - 7.72 X 4.56 MM
1.68 CARAT
F
VERY GOOD
VS 1
59.2%
63%
Slightly Thick To Thick (Faceted)
Pointed
VERY GOOD
EXCELLENT
NONE
IGI LG783646737
Comments: This Laboratory Grown Diamond was created by Chemical Vapor Deposition (CVD) growth process. Type IIa