



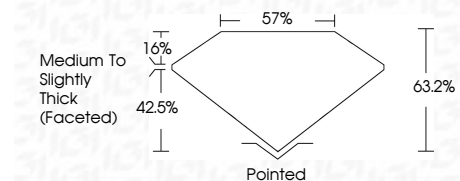
**ELECTRONIC COPY**

LG783643064  
Report verification at igi.org



April 10, 2026  
IGI Report Number **LG783643064**  
Description **LABORATORY GROWN DIAMOND**  
Shape and Cutting Style **MARQUISE BRILLIANT**  
Measurements **10.37 X 5.30 X 3.35 MM**

**GRADING RESULTS**  
Carat Weight **1.06 CARAT**  
Color Grade **E**  
Clarity Grade **VVS 2**



**ADDITIONAL GRADING INFORMATION**  
Polish **EXCELLENT**  
Symmetry **EXCELLENT**  
Fluorescence **NONE**  
Inscription(s) **IGI LG783643064**  
Comments: This Laboratory Grown Diamond was created by Chemical Vapor Deposition (CVD) growth process. Type IIa



April 10, 2026  
IGI Report No LG783643064  
**MARQUISE BRILLIANT**  
10.37 X 5.30 X 3.35 MM  
1.06 CARAT  
E  
VVS 2  
63.2%  
1.6%  
57%  
Medium to Slightly Thick (Faceted)  
Pointed  
EXCELLENT  
EXCELLENT  
NONE  
IGI LG783643064  
Comments: This Laboratory Grown Diamond was created by Chemical Vapor Deposition (CVD) growth process. Type IIa

**LABORATORY GROWN DIAMOND REPORT**

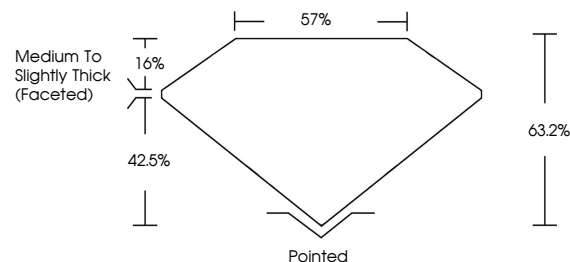
April 10, 2026  
IGI Report Number **LG783643064**  
Description **LABORATORY GROWN DIAMOND**  
Shape and Cutting Style **MARQUISE BRILLIANT**  
Measurements **10.37 X 5.30 X 3.35 MM**

**GRADING RESULTS**  
Carat Weight **1.06 CARAT**  
Color Grade **E**  
Clarity Grade **VVS 2**

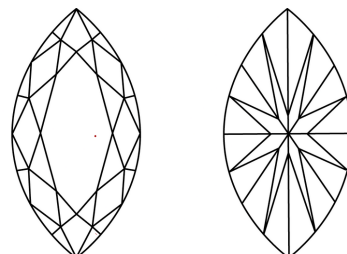
**ADDITIONAL GRADING INFORMATION**  
Polish **EXCELLENT**  
Symmetry **EXCELLENT**  
Fluorescence **NONE**  
Inscription(s) **IGI LG783643064**

Comments: This Laboratory Grown Diamond was created by Chemical Vapor Deposition (CVD) growth process. Type IIa

**PROPORTIONS**

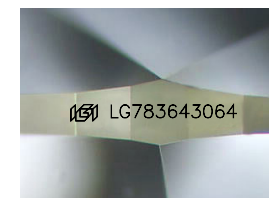


**CLARITY CHARACTERISTICS**



**KEY TO SYMBOLS**

Red symbols indicate internal characteristics.  
Green symbols indicate external characteristics.



Sample Image Used

**COLOR**

D E F G H I J Faint Very Light Light

**CLARITY**

FL	IF	VVS <sup>1-2</sup>	VS <sup>1-2</sup>	SI <sup>1-2</sup>	I <sup>1-3</sup>
Flawless	Internally Flawless	Very Very Slightly Included	Very Slightly Included	Slightly Included	Included

