



**ELECTRONIC COPY**

LG783642474  
Report verification at igi.org



April 2, 2026

IGI Report Number **LG783642474**

Description **LABORATORY GROWN DIAMOND**

Shape and Cutting Style **OVAL BRILLIANT**

Measurements **10.45 X 7.07 X 4.32 MM**

**GRADING RESULTS**

Carat Weight **2.02 CARATS**

Color Grade **D**

Clarity Grade **VVS 2**

April 2, 2026  
IGI Report Number **LG783642474**  
Description **LABORATORY GROWN DIAMOND**  
Shape and Cutting Style **OVAL BRILLIANT**  
Measurements **10.45 X 7.07 X 4.32 MM**

**GRADING RESULTS**

Carat Weight **2.02 CARATS**

Color Grade **D**

Clarity Grade **VVS 2**

**ADDITIONAL GRADING INFORMATION**

Polish **EXCELLENT**

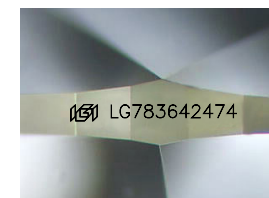
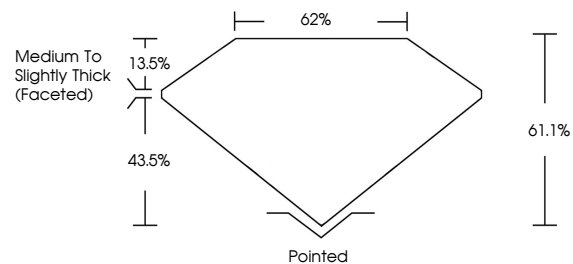
Symmetry **VERY GOOD**

Fluorescence **NONE**

Inscription(s) **IGI LG783642474**

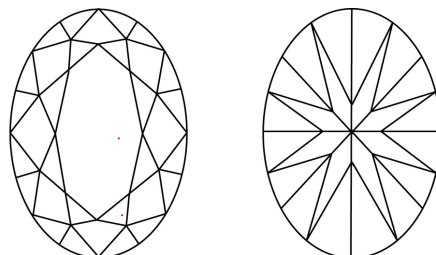
Comments: This Laboratory Grown Diamond was created by Chemical Vapor Deposition (CVD) growth process. Type IIa

**PROPORTIONS**



Sample Image Used

**CLARITY CHARACTERISTICS**



**KEY TO SYMBOLS**

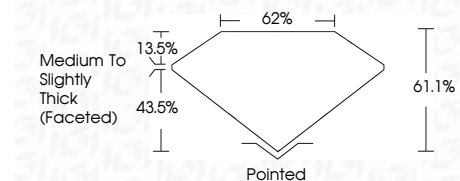
Red symbols indicate internal characteristics.  
Green symbols indicate external characteristics.

**COLOR**

D E F G H I J Faint Very Light Light

**CLARITY**

FL	IF	VVS <sup>1-2</sup>	VS <sup>1-2</sup>	SI <sup>1-2</sup>	I <sup>1-3</sup>
Flawless	Internally Flawless	Very Very Slightly Included	Very Slightly Included	Slightly Included	Included



**ADDITIONAL GRADING INFORMATION**

Polish **EXCELLENT**

Symmetry **VERY GOOD**

Fluorescence **NONE**

Inscription(s) **IGI LG783642474**

Comments: This Laboratory Grown Diamond was created by Chemical Vapor Deposition (CVD) growth process. Type IIa



**IGI**



April 2, 2026  
IGI Report No LG783642474  
OVAL BRILLIANT  
10.45 X 7.07 X 4.32 MM  
2.02 CARATS  
D  
Color Grade  
VVS 2  
61.1%  
62%  
Medium to Slightly Thick (Faceted)  
Pointed  
EXCELLENT  
VERY GOOD  
NONE  
IGI LG783642474

Comments: This Laboratory Grown Diamond was created by Chemical Vapor Deposition (CVD) growth process. Type IIa