



ELECTRONIC COPY

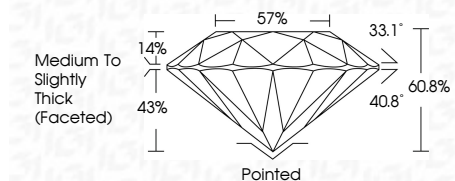
LG783641266 Report verification at igi.org



April 17, 2026 IGI Report Number LG783641266 Description LABORATORY GROWN DIAMOND Shape and Cutting Style ROUND BRILLIANT Measurements 8.91 - 8.94 X 5.42 MM

GRADING RESULTS

Carat Weight 2.63 CARATS Color Grade D Clarity Grade FLAWLESS Cut Grade IDEAL



ADDITIONAL GRADING INFORMATION

Polish EXCELLENT Symmetry EXCELLENT Fluorescence NONE Inscription(s) LG783641266 Comments: As Grown - No indication of post-growth treatment. This Laboratory Grown Diamond was created by High Pressure High Temperature (HPHT) growth process. Type II



April 17, 2026 IGI Report No LG783641266 ROUND BRILLIANT 8.91 - 8.94 X 5.42 MM 2.63 CARATS D FLAWLESS IDEAL 60.8% 33.1° 40.8% 14% Medium To Slightly Thick (Faceted) Pointed EXCELLENT EXCELLENT NONE LG783641266

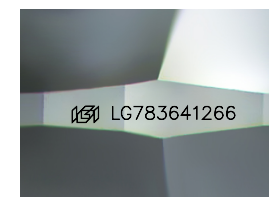
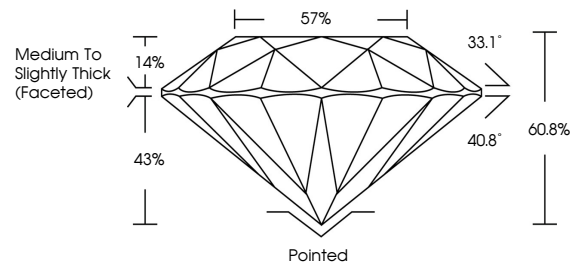
April 17, 2026 IGI Report Number LG783641266 Description LABORATORY GROWN DIAMOND Shape and Cutting Style ROUND BRILLIANT Measurements 8.91 - 8.94 X 5.42 MM GRADING RESULTS Carat Weight 2.63 CARATS Color Grade D Clarity Grade FLAWLESS Cut Grade IDEAL

ADDITIONAL GRADING INFORMATION

Polish EXCELLENT Symmetry EXCELLENT Fluorescence NONE Inscription(s) LG783641266

Comments: As Grown - No indication of post-growth treatment. This Laboratory Grown Diamond was created by High Pressure High Temperature (HPHT) growth process. Type II

PROPORTIONS



Sample Image Used

COLOR

D E F G H I J Faint Very Light Light

CLARITY

FL IF VS 1-2 VS 1-2 SI 1-2 I 1-3 Flawless Internally Flawless Very Very Slightly Included Very Slightly Included Slightly Included Included

