



**ELECTRONIC COPY**

LG783639505  
Report verification at igi.org



April 2, 2026

IGI Report Number **LG783639505**

Description **LABORATORY GROWN DIAMOND**

Shape and Cutting Style **EMERALD CUT**

Measurements **8.45 X 6.03 X 3.94 MM**

**GRADING RESULTS**

Carat Weight **2.05 CARATS**

Color Grade **FANCY INTENSE PINK**

Clarity Grade **VS 1**

April 2, 2026  
IGI Report Number **LG783639505**  
Description **LABORATORY GROWN DIAMOND**  
Shape and Cutting Style **EMERALD CUT**  
Measurements **8.45 X 6.03 X 3.94 MM**

**GRADING RESULTS**

Carat Weight **2.05 CARATS**

Color Grade **FANCY INTENSE PINK**

Clarity Grade **VS 1**

**ADDITIONAL GRADING INFORMATION**

Polish **EXCELLENT**

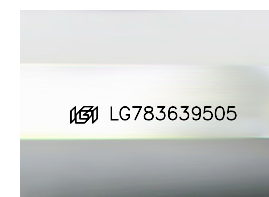
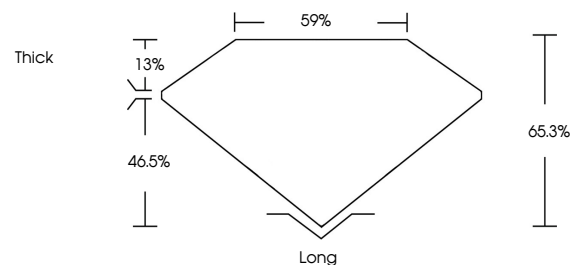
Symmetry **EXCELLENT**

Fluorescence **STRONG**

Inscription(s) **LG783639505**

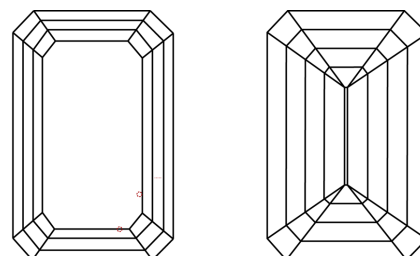
Comments: This Laboratory Grown Diamond was created by Chemical Vapor Deposition (CVD) growth process.  
Indications of post-growth treatment.

**PROPORTIONS**



Sample Image Used

**CLARITY CHARACTERISTICS**



**KEY TO SYMBOLS**

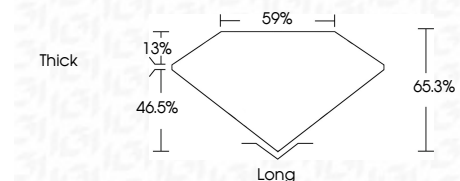
Red symbols indicate internal characteristics.  
Green symbols indicate external characteristics.

**COLOR**

D E F G H I J Faint Very Light Light

**CLARITY**

FL	IF	VS <sup>1-2</sup>	VS <sup>1-2</sup>	SI <sup>1-2</sup>	I <sup>1-3</sup>
Flawless	Internally Flawless	Very Very Slightly Included	Very Slightly Included	Slightly Included	Included



**ADDITIONAL GRADING INFORMATION**

Polish **EXCELLENT**

Symmetry **EXCELLENT**

Fluorescence **STRONG**

Inscription(s) **LG783639505**

Comments: This Laboratory Grown Diamond was created by Chemical Vapor Deposition (CVD) growth process.  
Indications of post-growth treatment.



April 2, 2026  
IGI Report No **LG783639505**  
**EMERALD CUT**  
**2.05 CARATS**  
Carat Weight **FANCY INTENSE PINK**  
Color Grade **VS 1**  
Depth **65.3%**  
Table **59%**  
Girdle **Thick**  
Culet **Long**  
Polish **EXCELLENT**  
Symmetry **EXCELLENT**  
Fluorescence **STRONG**  
Inscription(s) **LG783639505**  
Comments: This Laboratory Grown Diamond was created by Chemical Vapor Deposition (CVD) growth process.  
Indications of post-growth treatment.