



ELECTRONIC COPY

LG783638461
Report verification at igi.org



April 1, 2026

IGI Report Number **LG783638461**

Description **LABORATORY GROWN DIAMOND**

Shape and Cutting Style **CUT CORNERED
RECTANGULAR MODIFIED
BRILLIANT**

Measurements **7.04 X 5.07 X 3.31 MM**

GRADING RESULTS

Carat Weight **1.10 CARAT**

Color Grade **FANCY VIVID YELLOW**

Clarity Grade **VVS 2**

April 1, 2026

IGI Report Number **LG783638461**

Description **LABORATORY GROWN DIAMOND**

Shape and Cutting Style **CUT CORNERED RECTANGULAR
MODIFIED BRILLIANT**

Measurements **7.04 X 5.07 X 3.31 MM**

GRADING RESULTS

Carat Weight **1.10 CARAT**

Color Grade **FANCY VIVID YELLOW**

Clarity Grade **VVS 2**

ADDITIONAL GRADING INFORMATION

Polish **VERY GOOD**

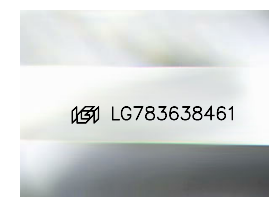
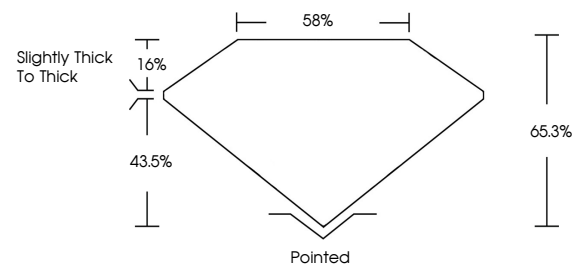
Symmetry **VERY GOOD**

Fluorescence **NONE**

Inscription(s) **IGI LG783638461**

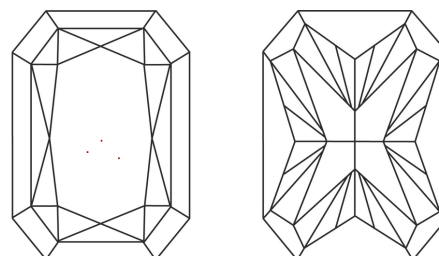
Comments: This Laboratory Grown Diamond was created by Chemical Vapor Deposition (CVD) growth process.

PROPORTIONS



Sample Image Used

CLARITY CHARACTERISTICS



KEY TO SYMBOLS

Red symbols indicate internal characteristics.
Green symbols indicate external characteristics.

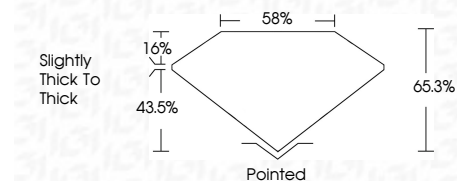
COLOR

D E F G H I J Faint Very Light Light

CLARITY

FL IF VVS¹⁻² VS¹⁻² SI¹⁻² I¹⁻³

Flawless Internally Flawless Very Very Slightly Included Very Slightly Included Slightly Included Included



ADDITIONAL GRADING INFORMATION

Polish **VERY GOOD**

Symmetry **VERY GOOD**

Fluorescence **NONE**

Inscription(s) **IGI LG783638461**

Comments: This Laboratory Grown Diamond was created by Chemical Vapor Deposition (CVD) growth process.



IGI



April 1, 2026
IGI Report No LG783638461
CUT CORNERED RECT. MODIFIED BRILLIANT
7.04 X 5.07 X 3.31 MM
Carat Weight 1.10 CARAT
Color Grade FANCY VIVID YELLOW
Clarity Grade VVS 2
Depth 43.5%
Table 58%
Girdle Slightly thick to thick
Culet Pointed
Polish VERY GOOD
Symmetry VERY GOOD
Fluorescence NONE
Inscription(s) IGI LG783638461
Comments: This Laboratory Grown Diamond was created by Chemical Vapor Deposition (CVD) growth process.