



ELECTRONIC COPY

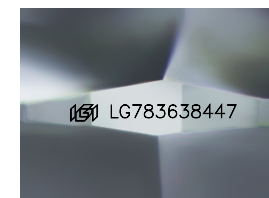
LG783638447
Report verification at igi.org



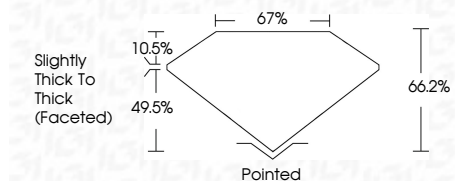
April 1, 2026
IGI Report Number **LG783638447**
Description **LABORATORY GROWN DIAMOND**
Shape and Cutting Style **SQUARE CUSHION MODIFIED BRILLIANT**

Measurements **7.13 X 6.86 X 4.54 MM**

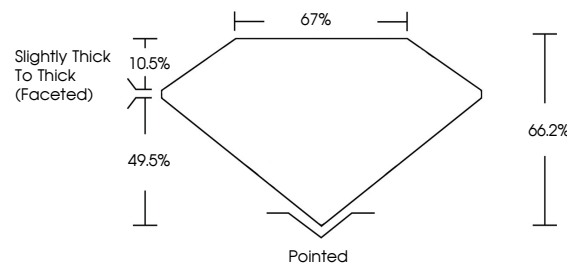
GRADING RESULTS
Carat Weight **2.03 CARATS**
Color Grade **FANCY INTENSE YELLOW**
Clarity Grade **SI 1**



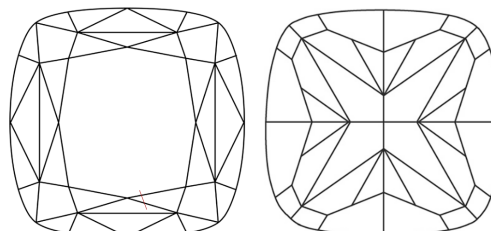
Sample Image Used



PROPORTIONS



CLARITY CHARACTERISTICS



KEY TO SYMBOLS

Red symbols indicate internal characteristics.
Green symbols indicate external characteristics.

COLOR

D E F G H I J Faint Very Light Light

CLARITY

FL	IF	VS ¹⁻²	VS ¹⁻²	SI ¹⁻²	I ¹⁻³
Flawless	Internally Flawless	Very Very Slightly Included	Very Slightly Included	Slightly Included	Included

ADDITIONAL GRADING INFORMATION

Polish **VERY GOOD**
Symmetry **EXCELLENT**
Fluorescence **NONE**
Inscription(s) **IGI LG783638447**
Comments: This Laboratory Grown Diamond was created by Chemical Vapor Deposition (CVD) growth process.



IGI



April 1, 2026
IGI Report No. LG783638447
SQUARE CUSHION MODIFIED BRILLIANT
7.13 X 6.86 X 4.54 MM
2.03 CARATS
FANCY INTENSE YELLOW
SI 1
66.2%
67%
Slightly Thick To Thick (Faceted)
Pointed
VERY GOOD
EXCELLENT
NONE
IGI LG783638447
Comments: This Laboratory Grown Diamond was created by Chemical Vapor Deposition (CVD) growth process.