



ELECTRONIC COPY

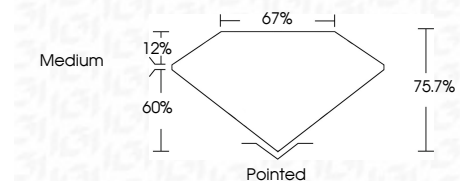
LG783634385
Report verification at igi.org



March 30, 2026
IGI Report Number **LG783634385**
Description **LABORATORY GROWN DIAMOND**
Shape and Cutting Style **MODIFIED PRINCESS CUT**
Measurements **6.14 X 6.06 X 4.59 MM**

GRADING RESULTS

Carat Weight **1.52 CARAT**
Color Grade **F**
Clarity Grade **VS 2**



ADDITIONAL GRADING INFORMATION

Polish **VERY GOOD**
Symmetry **VERY GOOD**
Fluorescence **NONE**
Inscription(s) **IGI LG783634385
100 FACETS**

Comments: This Laboratory Grown Diamond was created by Chemical Vapor Deposition (CVD) growth process. Type IIa



March 30, 2026
IGI Report No LG783634385
MODIFIED PRINCESS CUT
6.14 X 6.06 X 4.59 MM
Carat Weight **1.52 CARAT**
Color Grade **F**
Clarity Grade **VS 2**
Depth **75.7%**
Table **60%**
Girdle **Medium**
Culet **Pointed**
Polish **VERY GOOD**
Symmetry **VERY GOOD**
Fluorescence **NONE**
Inscription(s) **IGI LG783634385 100 FACETS**
Comments: This Laboratory Grown Diamond was created by Chemical Vapor Deposition (CVD) growth process. Type IIa

LABORATORY GROWN DIAMOND REPORT

March 30, 2026
IGI Report Number **LG783634385**
Description **LABORATORY GROWN DIAMOND**
Shape and Cutting Style **MODIFIED PRINCESS CUT**
Measurements **6.14 X 6.06 X 4.59 MM**

GRADING RESULTS

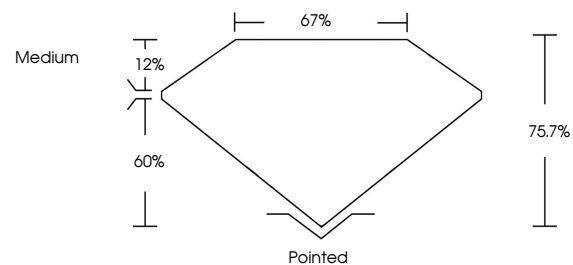
Carat Weight **1.52 CARAT**
Color Grade **F**
Clarity Grade **VS 2**

ADDITIONAL GRADING INFORMATION

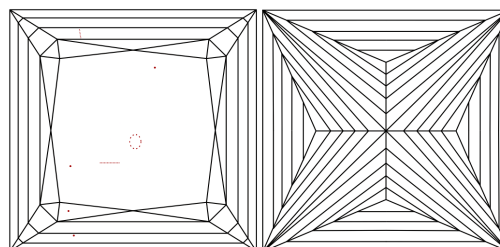
Polish **VERY GOOD**
Symmetry **VERY GOOD**
Fluorescence **NONE**
Inscription(s) **IGI LG783634385
100 FACETS**

Comments: This Laboratory Grown Diamond was created by Chemical Vapor Deposition (CVD) growth process. Type IIa

PROPORTIONS

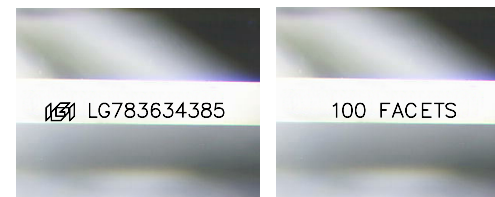


CLARITY CHARACTERISTICS



KEY TO SYMBOLS

Red symbols indicate internal characteristics.
Green symbols indicate external characteristics.



Sample Images Used

COLOR

D E F G H I J Faint Very Light Light

CLARITY

FL	IF	VS ¹⁻²	VS ¹⁻²	SI ¹⁻²	I ¹⁻³
Flawless	Internally Flawless	Very Very Slightly Included	Very Slightly Included	Slightly Included	Included

