



LABORATORY GROWN DIAMOND REPORT

March 18, 2026
 IGI Report Number **LG783633074**
 Description **LABORATORY GROWN DIAMOND**
 Shape and Cutting Style **PRINCESS CUT**
 Measurements **4.89 X 4.79 X 3.37 MM**

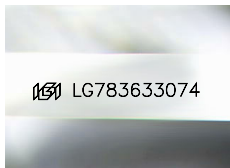
GRADING RESULTS

Carat Weight **0.72 CARAT**
 Color Grade **F**
 Clarity Grade **VS 1**

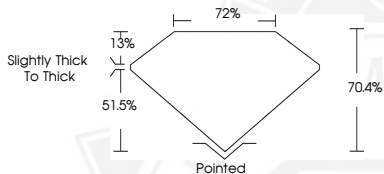
ADDITIONAL GRADING INFORMATION

Polish **VERY GOOD**
 Symmetry **VERY GOOD**
 Fluorescence **NONE**
 Inscription(s) **IGI LG783633074**

Comments: This Laboratory Grown Diamond was created by Chemical Vapor Deposition (CVD) growth process. Type IIa



Sample Image Used



March 18, 2026
 IGI Report Number **LG783633074**
PRINCESS CUT
LABORATORY GROWN DIAMOND
4.89 X 4.79 X 3.37 MM
 Carat Weight **0.72 CARAT**
 Color Grade **F**
 Clarity Grade **VS 1**
 Polish **VERY GOOD**
 Symmetry **VERY GOOD**
 Fluorescence **NONE**
 Inscription(s) **IGI LG783633074**

Comments: This Laboratory Grown Diamond was created by Chemical Vapor Deposition (CVD) growth process. Type IIa



March 18, 2026
 IGI Report Number **LG783633074**
PRINCESS CUT
LABORATORY GROWN DIAMOND
4.89 X 4.79 X 3.37 MM
 Carat Weight **0.72 CARAT**
 Color Grade **F**
 Clarity Grade **VS 1**
 Polish **VERY GOOD**
 Symmetry **VERY GOOD**
 Fluorescence **NONE**
 Inscription(s) **IGI LG783633074**

Comments: This Laboratory Grown Diamond was created by Chemical Vapor Deposition (CVD) growth process. Type IIa



THIS DOCUMENT WAS PRODUCED WITH THE FOLLOWING SECURITY MEASURES: SPECIAL DOCUMENT PAPER, INK SCREENS, WATERMARK, BACKGROUND DESIGNS, HOLOGRAM AND OTHER SECURITY FEATURES NOT LISTED AND DO EXCEED DOCUMENT SECURITY INDUSTRY GUIDELINES.