



**ELECTRONIC COPY**

LG783632465  
Report verification at igi.org



April 6, 2026

IGI Report Number **LG783632465**

Description **LABORATORY GROWN DIAMOND**

Shape and Cutting Style **SQUARE CUSHION MODIFIED  
BRILLIANT**

Measurements **5.90 X 5.86 X 3.54 MM**

**GRADING RESULTS**

Carat Weight **1.11 CARAT**

Color Grade **FANCY YELLOW**

Clarity Grade **VS 2**

April 6, 2026  
IGI Report Number **LG783632465**  
Description **LABORATORY GROWN DIAMOND**  
Shape and Cutting Style **SQUARE CUSHION MODIFIED  
BRILLIANT**  
Measurements **5.90 X 5.86 X 3.54 MM**

**GRADING RESULTS**

Carat Weight **1.11 CARAT**

Color Grade **FANCY YELLOW**

Clarity Grade **VS 2**

**ADDITIONAL GRADING INFORMATION**

Polish **EXCELLENT**

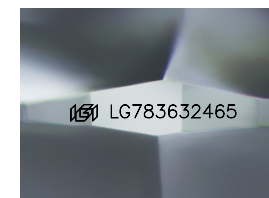
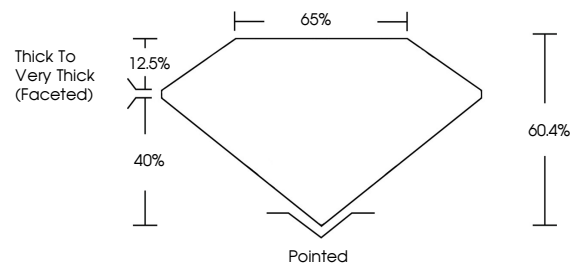
Symmetry **EXCELLENT**

Fluorescence **NONE**

Inscription(s) **IGI LG783632465**

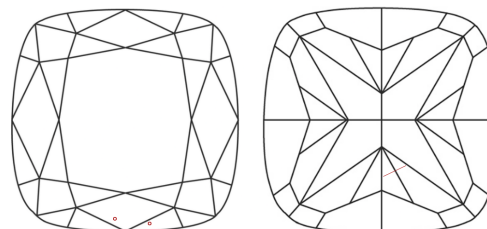
Comments: This Laboratory Grown Diamond was created by Chemical Vapor Deposition (CVD) growth process.

**PROPORTIONS**



Sample Image Used

**CLARITY CHARACTERISTICS**



**KEY TO SYMBOLS**

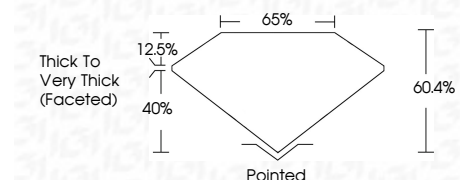
Red symbols indicate internal characteristics.  
Green symbols indicate external characteristics.

**COLOR**

D E F G H I J Faint Very Light Light

**CLARITY**

FL	IF	VS <sup>1-2</sup>	VS <sup>1-2</sup>	SI <sup>1-2</sup>	I <sup>1-3</sup>
Flawless	Internally Flawless	Very Very Slightly Included	Very Slightly Included	Slightly Included	Included



**ADDITIONAL GRADING INFORMATION**

Polish **EXCELLENT**

Symmetry **EXCELLENT**

Fluorescence **NONE**

Inscription(s) **IGI LG783632465**

Comments: This Laboratory Grown Diamond was created by Chemical Vapor Deposition (CVD) growth process.



**IGI**



April 6, 2026  
IGI Report No LG783632465  
**SQUARE CUSHION MODIFIED BRILLIANT**  
1.11 CARAT  
FANCY YELLOW  
VS 2  
5.90 X 5.86 X 3.54 MM  
60.4%  
40%  
12.5%  
65%  
Thick to Very Thick (Faceted)  
Pointed  
EXCELLENT  
EXCELLENT  
NONE  
IGI LG783632465  
Comments: This Laboratory Grown Diamond was created by Chemical Vapor Deposition (CVD) growth process.