



ELECTRONIC COPY

LG783632376
Report verification at igi.org



March 26, 2026
IGI Report Number **LG783632376**
Description **LABORATORY GROWN DIAMOND**
Shape and Cutting Style **CUT CORNERED
RECTANGULAR MIXED CUT**
Measurements **10.19 X 8.04 X 2.97 MM**
GRADING RESULTS
Carat Weight **2.01 CARATS**
Color Grade **FANCY BROWN**
Clarity Grade **SI 2**

LABORATORY GROWN DIAMOND REPORT

March 26, 2026
IGI Report Number **LG783632376**
Description **LABORATORY GROWN DIAMOND**
Shape and Cutting Style **CUT CORNERED RECTANGULAR
MIXED CUT**
Measurements **10.19 X 8.04 X 2.97 MM**

GRADING RESULTS

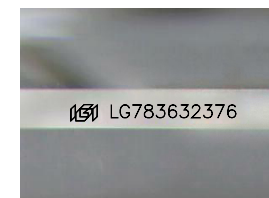
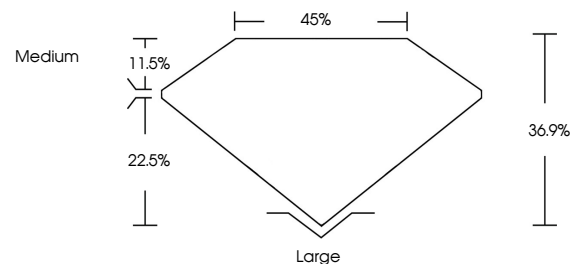
Carat Weight **2.01 CARATS**
Color Grade **FANCY BROWN**
Clarity Grade **SI 2**

ADDITIONAL GRADING INFORMATION

Polish **EXCELLENT**
Symmetry **EXCELLENT**
Fluorescence **NONE**
Inscription(s) **IGI LG783632376**

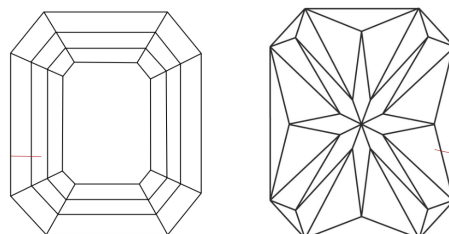
Comments: This Laboratory Grown Diamond was created by Chemical Vapor Deposition (CVD) growth process.

PROPORTIONS



Sample Image Used

CLARITY CHARACTERISTICS



KEY TO SYMBOLS

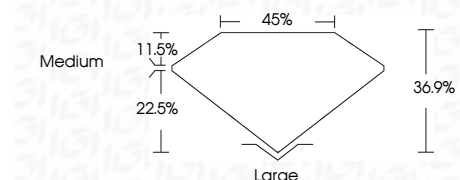
Red symbols indicate internal characteristics.
Green symbols indicate external characteristics.

COLOR

D E F G H I J Faint Very Light Light

CLARITY

FL	IF	VS ¹⁻²	VS ¹⁻²	SI ¹⁻²	I ¹⁻³
Flawless	Internally Flawless	Very Very Slightly Included	Very Slightly Included	Slightly Included	Included



ADDITIONAL GRADING INFORMATION

Polish **EXCELLENT**
Symmetry **EXCELLENT**
Fluorescence **NONE**
Inscription(s) **IGI LG783632376**
Comments: This Laboratory Grown Diamond was created by Chemical Vapor Deposition (CVD) growth process.



March 26, 2026
IGI Report No **LG783632376**
CUT CORNERED RECT. MIXED CUT
2.01 CARATS
FANCY BROWN
SI 2
36.9%
45%
Medium
Large
EXCELLENT
EXCELLENT
NONE
IGI LG783632376
Comments: This Laboratory Grown Diamond was created by Chemical Vapor Deposition (CVD) growth process.