



**ELECTRONIC COPY**

LG783631999  
Report verification at igi.org



March 26, 2026  
IGI Report Number **LG783631999**  
Description **LABORATORY GROWN DIAMOND**  
Shape and Cutting Style **CUT CORNERED TRIANGULAR  
STEP CUT**  
Measurements **6.29 X 7.16 X 3.47 MM**  
**GRADING RESULTS**  
Carat Weight **1.06 CARAT**  
Color Grade **FANCY INTENSE YELLOW**  
Clarity Grade **VVS 2**

**LABORATORY GROWN DIAMOND REPORT**

March 26, 2026  
IGI Report Number **LG783631999**  
Description **LABORATORY GROWN DIAMOND**  
Shape and Cutting Style **CUT CORNERED TRIANGULAR  
STEP CUT**  
Measurements **6.29 X 7.16 X 3.47 MM**

**GRADING RESULTS**

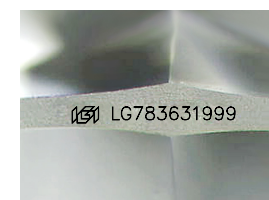
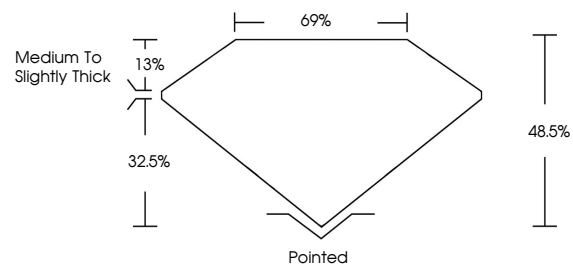
Carat Weight **1.06 CARAT**  
Color Grade **FANCY INTENSE YELLOW**  
Clarity Grade **VVS 2**

**ADDITIONAL GRADING INFORMATION**

Polish **VERY GOOD**  
Symmetry **VERY GOOD**  
Fluorescence **NONE**  
Inscription(s) **IGI LG783631999**

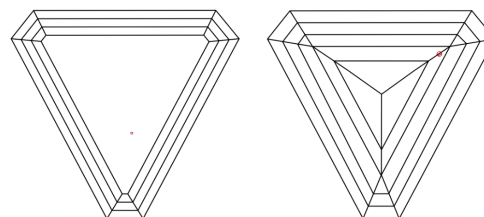
Comments: This Laboratory Grown Diamond was created by Chemical Vapor Deposition (CVD) growth process.

**PROPORTIONS**



Sample Image Used

**CLARITY CHARACTERISTICS**



**KEY TO SYMBOLS**

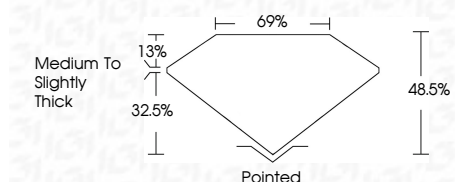
Red symbols indicate internal characteristics.  
Green symbols indicate external characteristics.

**COLOR**

D E F G H I J Faint Very Light Light

**CLARITY**

FL	IF	VVS <sup>1-2</sup>	VS <sup>1-2</sup>	SI <sup>1-2</sup>	I <sup>1-3</sup>
Flawless	Internally Flawless	Very Very Slightly Included	Very Slightly Included	Slightly Included	Included



**ADDITIONAL GRADING INFORMATION**

Polish **VERY GOOD**  
Symmetry **VERY GOOD**  
Fluorescence **NONE**  
Inscription(s) **IGI LG783631999**  
Comments: This Laboratory Grown Diamond was created by Chemical Vapor Deposition (CVD) growth process.



March 26, 2026  
IGI Report No LG783631999  
**CUT CORNERED TRIANGULAR STEP CUT**  
6.29 X 7.16 X 3.47 MM  
1.06 CARAT  
FANCY INTENSE YELLOW  
VVS 2  
48.5%  
69%  
Medium to Slightly Thick  
Pointed  
Polish VERY GOOD  
Symmetry VERY GOOD  
Fluorescence NONE  
Inscription(s) IGI LG783631999  
Comments: This Laboratory Grown Diamond was created by Chemical Vapor Deposition (CVD) growth process.