



ELECTRONIC COPY

LG783631710
Report verification at igi.org



April 6, 2026

IGI Report Number **LG783631710**

Description **LABORATORY GROWN DIAMOND**

Shape and Cutting Style **EMERALD CUT**

Measurements **11.26 X 7.87 X 5.43 MM**

GRADING RESULTS

Carat Weight **5.08 CARATS**

Color Grade **FANCY INTENSE PINK**

Clarity Grade **VS 1**

April 6, 2026
IGI Report Number **LG783631710**
Description **LABORATORY GROWN DIAMOND**
Shape and Cutting Style **EMERALD CUT**
Measurements **11.26 X 7.87 X 5.43 MM**

GRADING RESULTS

Carat Weight **5.08 CARATS**

Color Grade **FANCY INTENSE PINK**

Clarity Grade **VS 1**

ADDITIONAL GRADING INFORMATION

Polish **EXCELLENT**

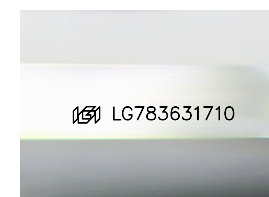
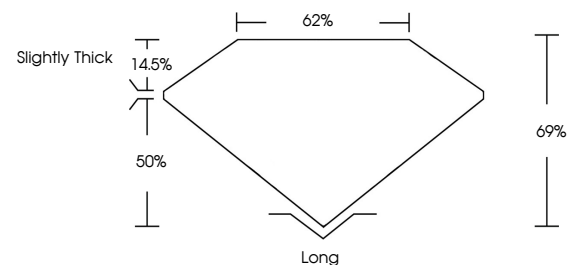
Symmetry **EXCELLENT**

Fluorescence **SLIGHT**

Inscription(s) **IGI LG783631710**

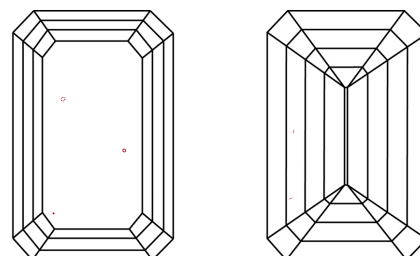
Comments: This Laboratory Grown Diamond was created by Chemical Vapor Deposition (CVD) growth process. Indications of post-growth treatment.

PROPORTIONS



Sample Image Used

CLARITY CHARACTERISTICS



KEY TO SYMBOLS

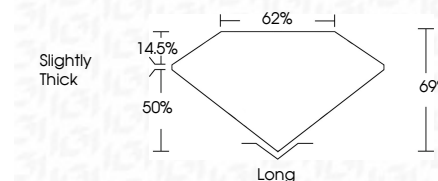
Red symbols indicate internal characteristics.
Green symbols indicate external characteristics.

COLOR

D E F G H I J Faint Very Light Light

CLARITY

FL	IF	VS ¹⁻²	VS ¹⁻²	SI ¹⁻²	I ¹⁻³
Flawless	Internally Flawless	Very Very Slightly Included	Very Slightly Included	Slightly Included	Included



ADDITIONAL GRADING INFORMATION

Polish **EXCELLENT**

Symmetry **EXCELLENT**

Fluorescence **SLIGHT**

Inscription(s) **IGI LG783631710**

Comments: This Laboratory Grown Diamond was created by Chemical Vapor Deposition (CVD) growth process. Indications of post-growth treatment.



April 6, 2026
IGI Report No **LG783631710**
EMERALD CUT
5.08 CARATS
Carat Weight
FANCY INTENSE PINK
Color Grade
VS 1
Clarity Grade
69%
Depth
62%
Table
Slightly Thick
Grades
Long
Cutlet
EXCELLENT
Polish
EXCELLENT
Symmetry
SLIGHT
Fluorescence
Inscription(s)
IGI LG783631710

Comments: This Laboratory Grown Diamond was created by Chemical Vapor Deposition (CVD) growth process. Indications of post-growth treatment.