



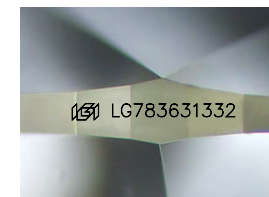
ELECTRONIC COPY

LG783631332
Report verification at igi.org



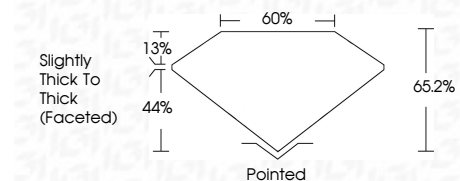
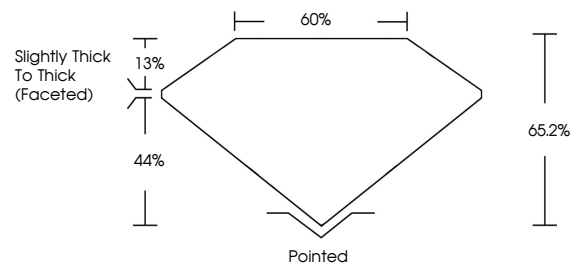
March 30, 2026
IGI Report Number **LG783631332**
Description **LABORATORY GROWN DIAMOND**
Shape and Cutting Style **OVAL MODIFIED BRILLIANT**
Measurements **8.50 X 5.61 X 3.66 MM**

GRADING RESULTS
Carat Weight **1.38 CARAT**
Color Grade **FANCY VIVID GREEN**
Clarity Grade **SI 1**

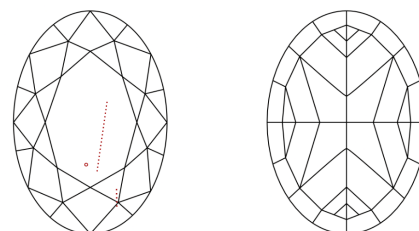


Sample Image Used

PROPORTIONS



CLARITY CHARACTERISTICS



KEY TO SYMBOLS

Red symbols indicate internal characteristics.
Green symbols indicate external characteristics.

COLOR

D E F G H I J Faint Very Light Light

CLARITY

FL	IF	VS ¹⁻²	VS ¹⁻²	SI ¹⁻²	I ¹⁻³
Flawless	Internally Flawless	Very Very Slightly Included	Very Slightly Included	Slightly Included	Included

ADDITIONAL GRADING INFORMATION

Polish **EXCELLENT**
Symmetry **EXCELLENT**
Fluorescence **NONE**

Inscription(s) **IGI LG783631332**
Comments: This Laboratory Grown Diamond was created by Chemical Vapor Deposition (CVD) growth process. Indications of post-growth treatment.



March 30, 2026
IGI Report No LG783631332
OVAL MODIFIED BRILLIANT
8.50 X 5.61 X 3.66 MM
1.38 CARAT
FANCY VIVID GREEN
SI 1
65.2%
60%
Slightly Thick To Thick (Faceted)
Pointed
EXCELLENT
EXCELLENT
NONE
IGI LG783631332
Comments: This Laboratory Grown Diamond was created by Chemical Vapor Deposition (CVD) growth process. Indications of post-growth treatment.