



**ELECTRONIC COPY**

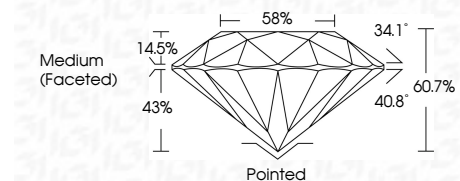
LG783631066  
Report verification at igi.org



March 27, 2026  
IGI Report Number **LG783631066**  
Description **LABORATORY GROWN DIAMOND**  
Shape and Cutting Style **ROUND BRILLIANT**  
Measurements **9.62 - 9.66 X 5.85 MM**

**GRADING RESULTS**

Carat Weight **3.32 CARATS**  
Color Grade **E**  
Clarity Grade **VS 1**  
Cut Grade **IDEAL**

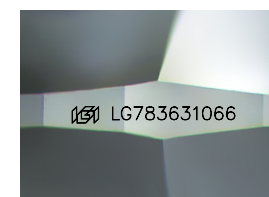


**ADDITIONAL GRADING INFORMATION**

Polish **EXCELLENT**  
Symmetry **EXCELLENT**  
Fluorescence **NONE**  
Inscription(s) **IGI LG783631066**  
Comments: HEARTS & ARROWS  
This Laboratory Grown Diamond was created by Chemical Vapor Deposition (CVD) growth process. Type IIa

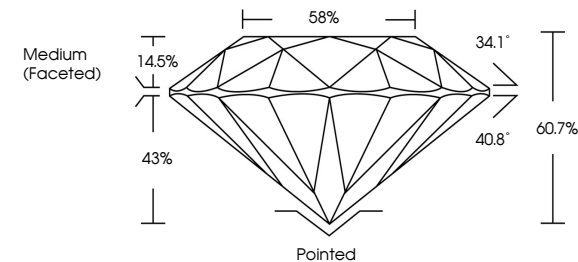


March 27, 2026  
IGI Report No LG783631066  
ROUND BRILLIANT  
9.62 - 9.66 X 5.85 MM  
3.32 CARATS  
E  
VS 1  
IDEAL  
60.7%  
58%  
Medium (Faceted)  
Pointed  
EXCELLENT  
EXCELLENT  
NONE  
IGI LG783631066  
Comments:  
HEARTS & ARROWS  
This Laboratory Grown Diamond was  
created by Chemical Vapor Deposition  
(CVD) growth process.  
Type IIa

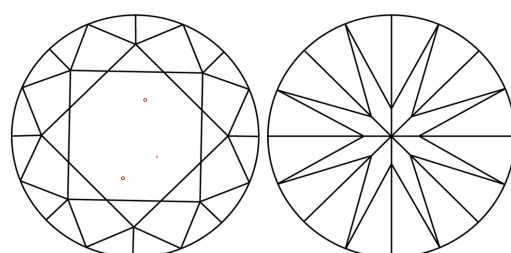


Sample Image Used

**PROPORTIONS**



**CLARITY CHARACTERISTICS**



**KEY TO SYMBOLS**

Red symbols indicate internal characteristics.  
Green symbols indicate external characteristics.



**COLOR**

D E F G H I J Faint Very Light Light

**CLARITY**

FL	IF	VS <sup>1-2</sup>	VS <sup>1-2</sup>	SI <sup>1-2</sup>	I <sup>1-3</sup>
Flawless	Internally Flawless	Very Very Slightly Included	Very Slightly Included	Slightly Included	Included

