



**ELECTRONIC COPY**

LG783630966  
Report verification at igi.org



March 25, 2026  
IGI Report Number **LG783630966**  
Description **LABORATORY GROWN DIAMOND**  
Shape and Cutting Style **CUT CORNERED  
RECTANGULAR MIXED CUT**  
Measurements **7.14 X 4.89 X 3.14 MM**  
**GRADING RESULTS**  
Carat Weight **1.03 CARAT**  
Color Grade **G**  
Clarity Grade **VS 1**

March 25, 2026  
IGI Report Number **LG783630966**  
Description **LABORATORY GROWN DIAMOND**  
Shape and Cutting Style **CUT CORNERED RECTANGULAR  
MIXED CUT**  
Measurements **7.14 X 4.89 X 3.14 MM**

**GRADING RESULTS**

Carat Weight **1.03 CARAT**  
Color Grade **G**  
Clarity Grade **VS 1**

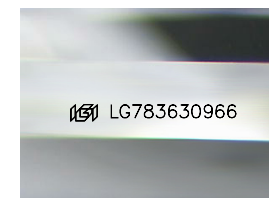
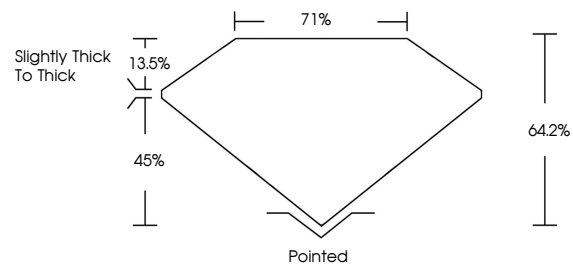
**ADDITIONAL GRADING INFORMATION**

Polish **EXCELLENT**  
Symmetry **EXCELLENT**  
Fluorescence **NONE**

Inscription(s) **IGI LG783630966**

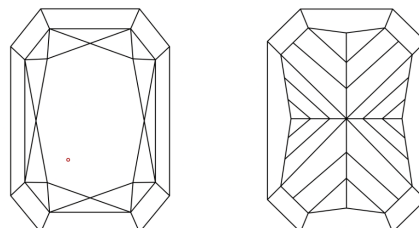
Comments: This Laboratory Grown Diamond was created by Chemical Vapor Deposition (CVD) growth process.  
Type IIa

**PROPORTIONS**



Sample Image Used

**CLARITY CHARACTERISTICS**



**KEY TO SYMBOLS**

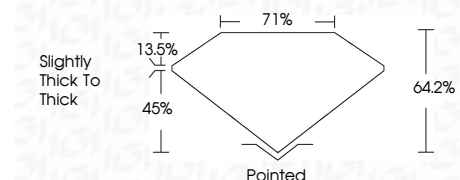
Red symbols indicate internal characteristics.  
Green symbols indicate external characteristics.

**COLOR**

D E F G H I J Faint Very Light Light

**CLARITY**

FL	IF	VS <sup>1-2</sup>	VS <sup>1-2</sup>	SI <sup>1-2</sup>	I <sup>1-3</sup>
Flawless	Internally Flawless	Very Very Slightly Included	Very Slightly Included	Slightly Included	Included



**ADDITIONAL GRADING INFORMATION**

Polish **EXCELLENT**  
Symmetry **EXCELLENT**  
Fluorescence **NONE**  
Inscription(s) **IGI LG783630966**  
Comments: This Laboratory Grown Diamond was created by Chemical Vapor Deposition (CVD) growth process.  
Type IIa



March 25, 2026  
IGI Report No **LG783630966**  
**CUT CORNERED RECT. MIXED CUT**  
**7.14 X 4.89 X 3.14 MM**  
Carat Weight **1.03 CARAT**  
Color Grade **G**  
Clarity Grade **VS 1**  
Depth **64.2%**  
Table **71%**  
Girdle **Slightly thick to Thick**  
Culet **Pointed**  
Polish **EXCELLENT**  
Symmetry **EXCELLENT**  
Fluorescence **NONE**  
Inscription(s) **IGI LG783630966**  
Comments: This Laboratory Grown Diamond was created by Chemical Vapor Deposition (CVD) growth process.  
Type IIa