



ELECTRONIC COPY

LG783630945
Report verification at igi.org



March 25, 2026
IGI Report Number **LG783630945**
Description **LABORATORY GROWN DIAMOND**
Shape and Cutting Style **SQUARE CUSHION MODIFIED BRILLIANT**
Measurements **12.56 X 12.41 X 6.97 MM**
GRADING RESULTS
Carat Weight **10.02 CARATS**
Color Grade **FANCY VIVID YELLOW**
Clarity Grade **VS 2**

March 25, 2026
IGI Report Number **LG783630945**
Description **LABORATORY GROWN DIAMOND**
Shape and Cutting Style **SQUARE CUSHION MODIFIED BRILLIANT**
Measurements **12.56 X 12.41 X 6.97 MM**

GRADING RESULTS

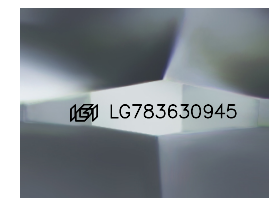
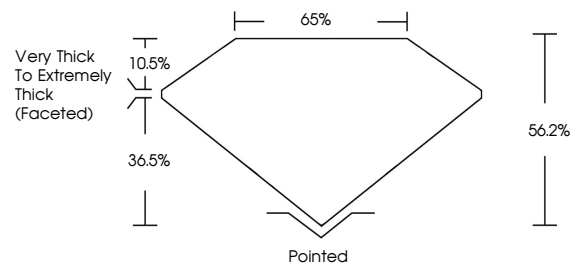
Carat Weight **10.02 CARATS**
Color Grade **FANCY VIVID YELLOW**
Clarity Grade **VS 2**

ADDITIONAL GRADING INFORMATION

Polish **EXCELLENT**
Symmetry **EXCELLENT**
Fluorescence **NONE**
Inscription(s) **IGI LG783630945**

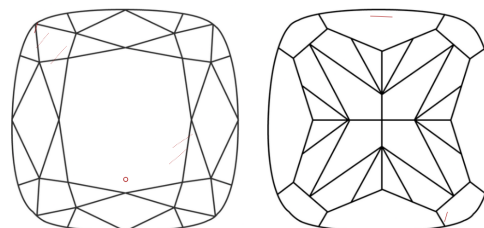
Comments: This Laboratory Grown Diamond was created by Chemical Vapor Deposition (CVD) growth process.

PROPORTIONS



Sample Image Used

CLARITY CHARACTERISTICS



KEY TO SYMBOLS

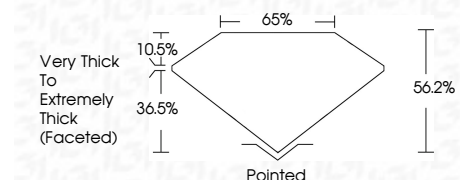
Red symbols indicate internal characteristics.
Green symbols indicate external characteristics.

COLOR

D E F G H I J Faint Very Light Light

CLARITY

FL	IF	VS ¹⁻²	VS ¹⁻²	SI ¹⁻²	I ¹⁻³
Flawless	Internally Flawless	Very Very Slightly Included	Very Slightly Included	Slightly Included	Included



ADDITIONAL GRADING INFORMATION

Polish **EXCELLENT**
Symmetry **EXCELLENT**
Fluorescence **NONE**
Inscription(s) **IGI LG783630945**
Comments: This Laboratory Grown Diamond was created by Chemical Vapor Deposition (CVD) growth process.



March 25, 2026
IGI Report No LG783630945
SQUARE CUSHION MODIFIED BRILLIANT
12.56 X 12.41 X 6.97 MM
10.02 CARATS
Carat Weight
Color Grade **FANCY VIVID YELLOW**
Color Grade
Clarity Grade **VS 2**
Depth
Table
Girdle
Very Thick to Extremely Thick (Faceted)
65%
65%
Pointed
Culet
Polish
Symmetry
Fluorescence
Inscription(s)
EXCELLENT
EXCELLENT
NONE
IGI LG783630945
Comments: This Laboratory Grown Diamond was created by Chemical Vapor Deposition (CVD) growth process.