



ELECTRONIC COPY

LG783629296
Report verification at igi.org



March 25, 2026

IGI Report Number **LG783629296**

Description **LABORATORY GROWN DIAMOND**

Shape and Cutting Style **CUT CORNERED
RECTANGULAR MODIFIED
BRILLIANT**

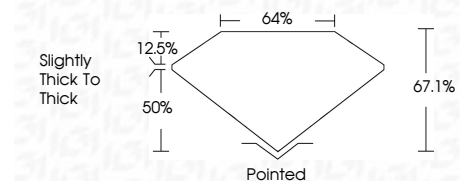
Measurements **10.05 X 7.05 X 4.73 MM**

GRADING RESULTS

Carat Weight **3.15 CARATS**

Color Grade **FANCY VIVID PINK**

Clarity Grade **VVS 2**



ADDITIONAL GRADING INFORMATION

Polish **EXCELLENT**

Symmetry **EXCELLENT**

Fluorescence **STRONG**

Inscription(s) **IGI LG783629296**

Comments: This Laboratory Grown Diamond was created by Chemical Vapor Deposition (CVD) growth process. Indications of post-growth treatment.



March 25, 2026
IGI Report No LG783629296
CUT CORNERED RECT. MODIFIED BRILLIANT
3.15 CARATS
FANCY VIVID PINK
VVS 2
67.1%
64%
Slightly thick to thick
Pointed
EXCELLENT
EXCELLENT
STRONG
IGI LG783629296

Comments: This Laboratory Grown Diamond was created by Chemical Vapor Deposition (CVD) growth process. Indications of post-growth treatment.

LABORATORY GROWN DIAMOND REPORT

March 25, 2026

IGI Report Number **LG783629296**

Description **LABORATORY GROWN DIAMOND**

Shape and Cutting Style **CUT CORNERED RECTANGULAR
MODIFIED BRILLIANT**

Measurements **10.05 X 7.05 X 4.73 MM**

GRADING RESULTS

Carat Weight **3.15 CARATS**

Color Grade **FANCY VIVID PINK**

Clarity Grade **VVS 2**

ADDITIONAL GRADING INFORMATION

Polish **EXCELLENT**

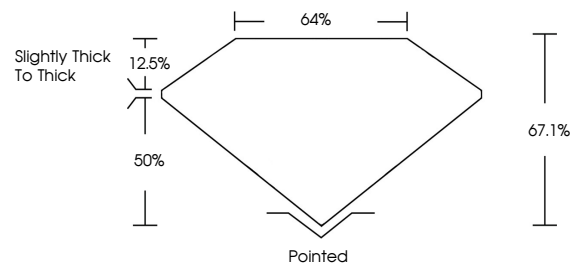
Symmetry **EXCELLENT**

Fluorescence **STRONG**

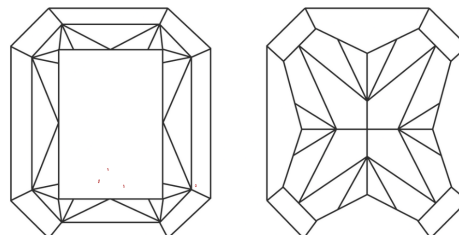
Inscription(s) **IGI LG783629296**

Comments: This Laboratory Grown Diamond was created by Chemical Vapor Deposition (CVD) growth process. Indications of post-growth treatment.

PROPORTIONS

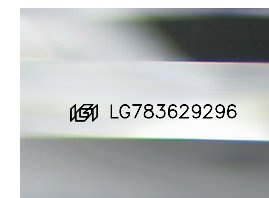


CLARITY CHARACTERISTICS



KEY TO SYMBOLS

Red symbols indicate internal characteristics.
Green symbols indicate external characteristics.



Sample Image Used

COLOR

D E F G H I J Faint Very Light Light

CLARITY

FL IF VVS¹⁻² VS¹⁻² SI¹⁻² I¹⁻³

Flawless Internally Flawless Very Very Slightly Included Very Slightly Included Slightly Included Included

