



ELECTRONIC COPY

LG783628911
Report verification at igi.org



March 28, 2026

IGI Report Number **LG783628911**

Description **LABORATORY GROWN DIAMOND**

Shape and Cutting Style **CUT CORNERED
RECTANGULAR MODIFIED
BRILLIANT**

Measurements **10.26 X 7.81 X 5.11 MM**

GRADING RESULTS

Carat Weight **4.04 CARATS**

Color Grade **FANCY INTENSE YELLOW**

Clarity Grade **VS 1**

March 28, 2026

IGI Report Number **LG783628911**

Description **LABORATORY GROWN DIAMOND**

Shape and Cutting Style **CUT CORNERED RECTANGULAR
MODIFIED BRILLIANT**

Measurements **10.26 X 7.81 X 5.11 MM**

GRADING RESULTS

Carat Weight **4.04 CARATS**

Color Grade **FANCY INTENSE YELLOW**

Clarity Grade **VS 1**

ADDITIONAL GRADING INFORMATION

Polish **EXCELLENT**

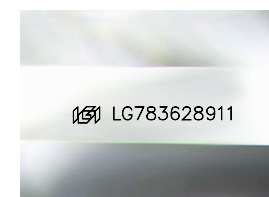
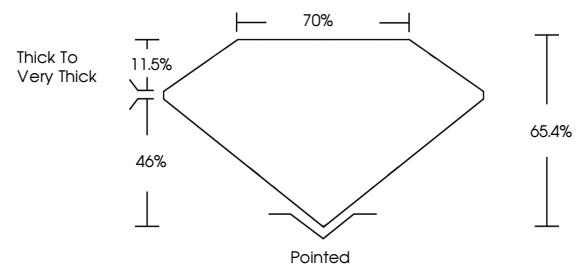
Symmetry **EXCELLENT**

Fluorescence **NONE**

Inscription(s) **IGI LG783628911**

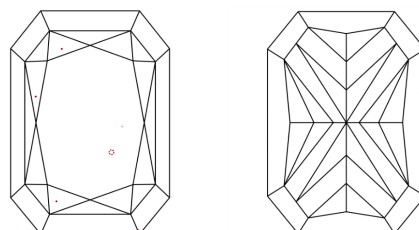
Comments: This Laboratory Grown Diamond was created by Chemical Vapor Deposition (CVD) growth process.

PROPORTIONS



Sample Image Used

CLARITY CHARACTERISTICS



KEY TO SYMBOLS

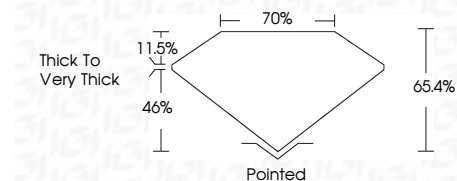
Red symbols indicate internal characteristics.
Green symbols indicate external characteristics.

COLOR

D E F G H I J Faint Very Light Light

CLARITY

FL	IF	VS ¹⁻²	VS ¹⁻²	SI ¹⁻²	I ¹⁻³
Flawless	Internally Flawless	Very Very Slightly Included	Very Slightly Included	Slightly Included	Included



ADDITIONAL GRADING INFORMATION

Polish **EXCELLENT**

Symmetry **EXCELLENT**

Fluorescence **NONE**

Inscription(s) **IGI LG783628911**

Comments: This Laboratory Grown Diamond was created by Chemical Vapor Deposition (CVD) growth process.



IGI



March 28, 2026
IGI Report No LG783628911
CUT CORNERED RECT. MODIFIED BRILLIANT
4.04 CARATS
Carat Weight
Color Grade FANCY INTENSE YELLOW
Clarity Grade VS 1
Table 11.5%
Depth 46%
Girdle 70%
Thick to Very Thick
Pointed
Culet
Polish EXCELLENT
Symmetry EXCELLENT
Fluorescence NONE
Inscription(s) IGI LG783628911
Comments: This Laboratory Grown Diamond was created by Chemical Vapor Deposition (CVD) growth process.