



ELECTRONIC COPY

LG783627992
Report verification at igi.org



March 24, 2026
IGI Report Number **LG783627992**
Description **LABORATORY GROWN DIAMOND**
Shape and Cutting Style **OVAL BRILLIANT**
Measurements **10.07 X 7.24 X 4.68 MM**
GRADING RESULTS
Carat Weight **2.57 CARATS**
Color Grade **FANCY YELLOW**
Clarity Grade **VS 2**

March 24, 2026
IGI Report Number **LG783627992**
Description **LABORATORY GROWN DIAMOND**
Shape and Cutting Style **OVAL BRILLIANT**
Measurements **10.07 X 7.24 X 4.68 MM**

GRADING RESULTS

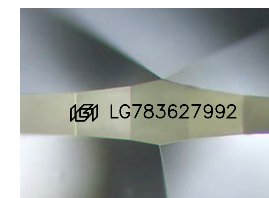
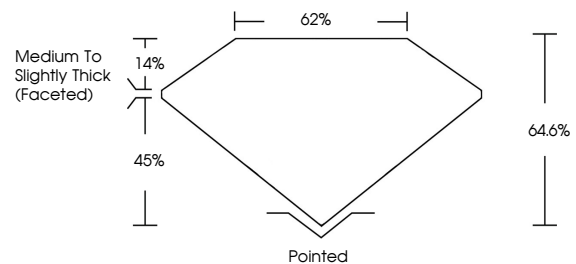
Carat Weight **2.57 CARATS**
Color Grade **FANCY YELLOW**
Clarity Grade **VS 2**

ADDITIONAL GRADING INFORMATION

Polish **EXCELLENT**
Symmetry **EXCELLENT**
Fluorescence **NONE**
Inscription(s) **IGI LG783627992**

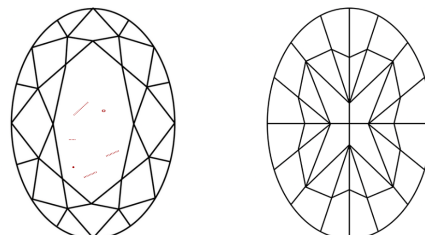
Comments: This Laboratory Grown Diamond was created by Chemical Vapor Deposition (CVD) growth process.

PROPORTIONS



Sample Image Used

CLARITY CHARACTERISTICS



KEY TO SYMBOLS

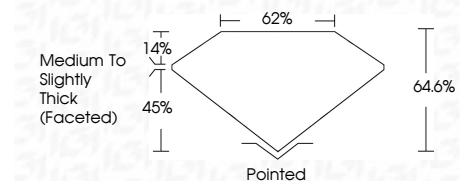
Red symbols indicate internal characteristics.
Green symbols indicate external characteristics.

COLOR

D E F G H I J Faint Very Light Light

CLARITY

FL	IF	VS ¹⁻²	VS ¹⁻²	SI ¹⁻²	I ¹⁻³
Flawless	Internally Flawless	Very Very Slightly Included	Very Slightly Included	Slightly Included	Included



ADDITIONAL GRADING INFORMATION

Polish **EXCELLENT**
Symmetry **EXCELLENT**
Fluorescence **NONE**
Inscription(s) **IGI LG783627992**
Comments: This Laboratory Grown Diamond was created by Chemical Vapor Deposition (CVD) growth process.



March 24, 2026
IGI Report No LG783627992
OVAL BRILLIANT
10.07 X 7.24 X 4.68 MM
2.57 CARATS
FANCY YELLOW
VS 2
64.6%
62%
Medium to Slightly Thick (Faceted)
Pointed
EXCELLENT
EXCELLENT
NONE
IGI LG783627992
Comments: This Laboratory Grown Diamond was created by Chemical Vapor Deposition (CVD) growth process.