



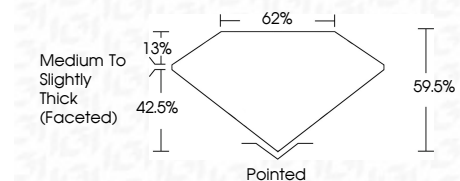
ELECTRONIC COPY

LG783624871
Report verification at igi.org



March 18, 2026
IGI Report Number **LG783624871**
Description **LABORATORY GROWN DIAMOND**
Shape and Cutting Style **PEAR BRILLIANT**
Measurements **9.56 X 5.83 X 3.47 MM**

GRADING RESULTS
Carat Weight **1.15 CARAT**
Color Grade **E**
Clarity Grade **VVS 2**



ADDITIONAL GRADING INFORMATION
Polish **EXCELLENT**
Symmetry **EXCELLENT**
Fluorescence **NONE**
Inscription(s) **IGI LG783624871**
Comments: This Laboratory Grown Diamond was created by Chemical Vapor Deposition (CVD) growth process. Type IIa



March 18, 2026
IGI Report No LG783624871
PEAR BRILLIANT
1.15 CARAT **E**
9.56 X 5.83 X 3.47 MM
Carat Weight
Color Grade
Clarity Grade
Depth
Table
Girdle
Medium to Slightly Thick (Faceted)
Culet
Polish
Symmetry
Fluorescence
Inscription(s)
EXCELLENT
EXCELLENT
NONE
IGI LG783624871
Comments: This Laboratory Grown Diamond was created by Chemical Vapor Deposition (CVD) growth process. Type IIa

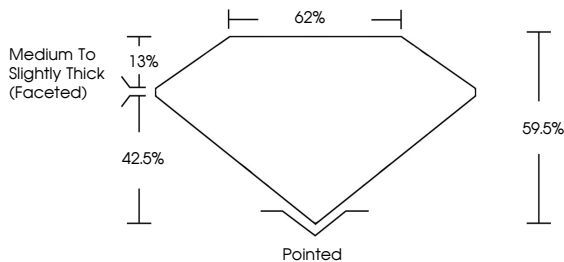
March 18, 2026
IGI Report Number **LG783624871**
Description **LABORATORY GROWN DIAMOND**
Shape and Cutting Style **PEAR BRILLIANT**
Measurements **9.56 X 5.83 X 3.47 MM**

GRADING RESULTS
Carat Weight **1.15 CARAT**
Color Grade **E**
Clarity Grade **VVS 2**

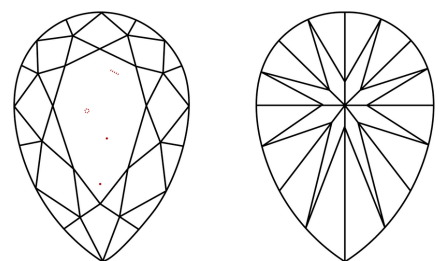
ADDITIONAL GRADING INFORMATION
Polish **EXCELLENT**
Symmetry **EXCELLENT**
Fluorescence **NONE**
Inscription(s) **IGI LG783624871**

Comments: This Laboratory Grown Diamond was created by Chemical Vapor Deposition (CVD) growth process. Type IIa

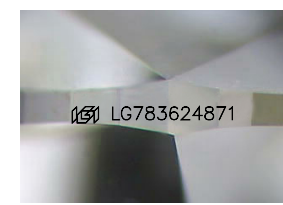
PROPORTIONS



CLARITY CHARACTERISTICS



KEY TO SYMBOLS
Red symbols indicate internal characteristics.
Green symbols indicate external characteristics.



Sample Image Used

COLOR

D	E	F	G	H	I	J	Faint	Very Light	Light
---	---	---	---	---	---	---	-------	------------	-------

CLARITY

FL	IF	VVS ¹⁻²	VS ¹⁻²	SI ¹⁻²	I ¹⁻³
Flawless	Internally Flawless	Very Very Slightly Included	Very Slightly Included	Slightly Included	Included

