



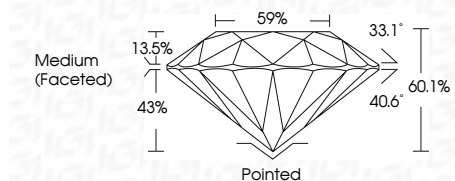
ELECTRONIC COPY

LG783621058
Report verification at igi.org



April 1, 2026
IGI Report Number **LG783621058**
Description **LABORATORY GROWN DIAMOND**
Shape and Cutting Style **ROUND BRILLIANT**
Measurements **10.32 - 10.35 X 6.21 MM**

GRADING RESULTS
Carat Weight **4.09 CARATS**
Color Grade **FANCY LIGHT PINK**
Clarity Grade **VS 2**
Cut Grade **IDEAL**



ADDITIONAL GRADING INFORMATION
Polish **EXCELLENT**
Symmetry **EXCELLENT**
Fluorescence **SLIGHT**
Inscription(s) **IGI LG783621058**
Comments: This Laboratory Grown Diamond was created by Chemical Vapor Deposition (CVD) growth process. Indications of post-growth treatment.



April 1, 2026
IGI Report No LG783621058
ROUND BRILLIANT
4.09 CARATS
FANCY LIGHT PINK
VS 2
IDEAL
60.1%
59%
Medium (Faceted)
Pointed
EXCELLENT
EXCELLENT
SLIGHT
IGI LG783621058
Comments: This Laboratory Grown Diamond was created by Chemical Vapor Deposition (CVD) growth process. Indications of post-growth treatment.

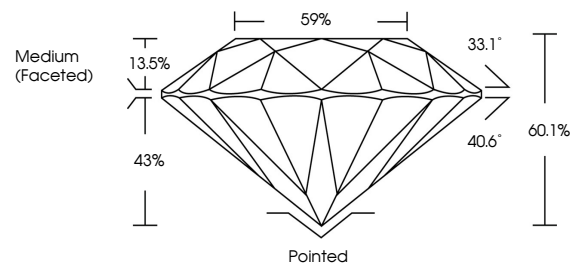
April 1, 2026
IGI Report Number **LG783621058**
Description **LABORATORY GROWN DIAMOND**
Shape and Cutting Style **ROUND BRILLIANT**
Measurements **10.32 - 10.35 X 6.21 MM**

GRADING RESULTS
Carat Weight **4.09 CARATS**
Color Grade **FANCY LIGHT PINK**
Clarity Grade **VS 2**
Cut Grade **IDEAL**

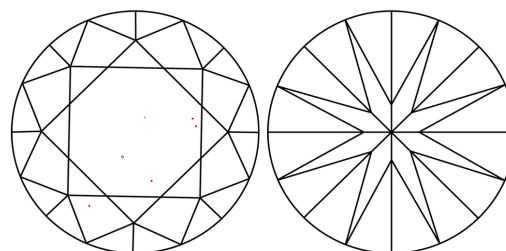
ADDITIONAL GRADING INFORMATION
Polish **EXCELLENT**
Symmetry **EXCELLENT**
Fluorescence **SLIGHT**
Inscription(s) **IGI LG783621058**

Comments: This Laboratory Grown Diamond was created by Chemical Vapor Deposition (CVD) growth process. Indications of post-growth treatment.

PROPORTIONS

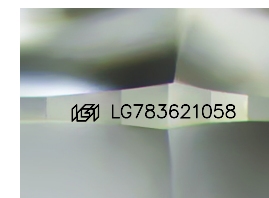


CLARITY CHARACTERISTICS



KEY TO SYMBOLS

Red symbols indicate internal characteristics.
Green symbols indicate external characteristics.



Sample Image Used

COLOR

D E F G H I J Faint Very Light Light

CLARITY

FL	IF	VS ¹⁻²	VS ¹⁻²	SI ¹⁻²	I ¹⁻³
Flawless	Internally Flawless	Very Very Slightly Included	Very Slightly Included	Slightly Included	Included

