



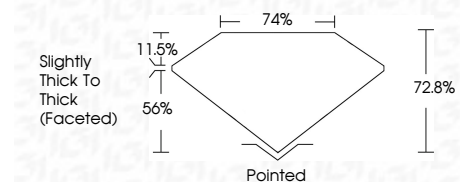
**ELECTRONIC COPY**

LG783617868  
Report verification at igi.org



April 15, 2026  
IGI Report Number **LG783617868**  
Description **LABORATORY GROWN DIAMOND**  
Shape and Cutting Style **FLOWER MODIFIED BRILLIANT**  
Measurements **6.90 X 6.83 X 4.97 MM**

**GRADING RESULTS**  
Carat Weight **2.05 CARATS**  
Color Grade **F**  
Clarity Grade **VS 1**



**ADDITIONAL GRADING INFORMATION**  
Polish **EXCELLENT**  
Symmetry **EXCELLENT**  
Fluorescence **NONE**  
Inscription(s) **IGI LG783617868**  
Comments: This Laboratory Grown Diamond was created by Chemical Vapor Deposition (CVD) growth process. Type IIa



April 15, 2026  
IGI Report No LG783617868  
**FLOWER MODIFIED BRILLIANT**  
6.90 X 6.83 X 4.97 MM  
2.05 CARATS  
F  
VS 1  
72.8%  
56%  
11.5%  
Slightly Thick To Thick (Faceted)  
Pointed  
EXCELLENT  
EXCELLENT  
NONE  
IGI LG783617868  
Comments: This Laboratory Grown Diamond was created by Chemical Vapor Deposition (CVD) growth process. Type IIa

**LABORATORY GROWN DIAMOND REPORT**

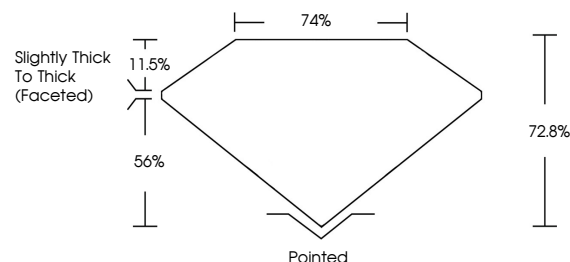
April 15, 2026  
IGI Report Number **LG783617868**  
Description **LABORATORY GROWN DIAMOND**  
Shape and Cutting Style **FLOWER MODIFIED BRILLIANT**  
Measurements **6.90 X 6.83 X 4.97 MM**

**GRADING RESULTS**  
Carat Weight **2.05 CARATS**  
Color Grade **F**  
Clarity Grade **VS 1**

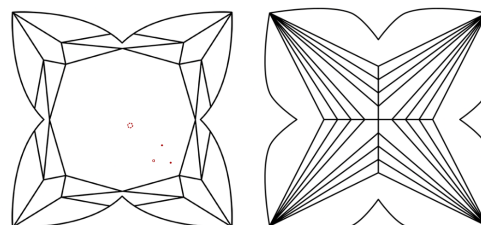
**ADDITIONAL GRADING INFORMATION**  
Polish **EXCELLENT**  
Symmetry **EXCELLENT**  
Fluorescence **NONE**  
Inscription(s) **IGI LG783617868**

Comments: This Laboratory Grown Diamond was created by Chemical Vapor Deposition (CVD) growth process. Type IIa

**PROPORTIONS**

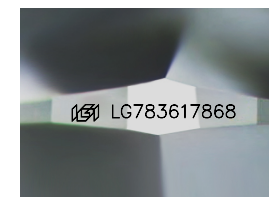


**CLARITY CHARACTERISTICS**



**KEY TO SYMBOLS**

Red symbols indicate internal characteristics.  
Green symbols indicate external characteristics.



Sample Image Used

**COLOR**

D E F G H I J Faint Very Light Light

**CLARITY**

FL	IF	VS <sup>1-2</sup>	VS <sup>1-2</sup>	SI <sup>1-2</sup>	I <sup>1-3</sup>
Flawless	Internally Flawless	Very Very Slightly Included	Very Slightly Included	Slightly Included	Included

