



ELECTRONIC COPY

LG783617821
Report verification at igi.org



April 15, 2026

IGI Report Number **LG783617821**

Description **LABORATORY GROWN DIAMOND**

Shape and Cutting Style **FLOWER MODIFIED BRILLIANT**

Measurements **7.21 X 7.19 X 5.01 MM**

GRADING RESULTS

Carat Weight **2.04 CARATS**

Color Grade **E**

Clarity Grade **VVS 2**

April 15, 2026

IGI Report Number **LG783617821**

Description **LABORATORY GROWN DIAMOND**

Shape and Cutting Style **FLOWER MODIFIED BRILLIANT**

Measurements **7.21 X 7.19 X 5.01 MM**

GRADING RESULTS

Carat Weight **2.04 CARATS**

Color Grade **E**

Clarity Grade **VVS 2**

ADDITIONAL GRADING INFORMATION

Polish **EXCELLENT**

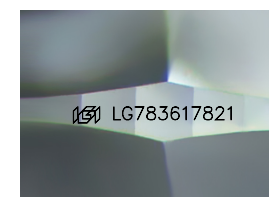
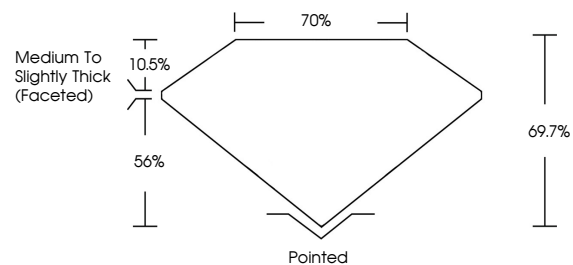
Symmetry **EXCELLENT**

Fluorescence **NONE**

Inscription(s) **IGI LG783617821**

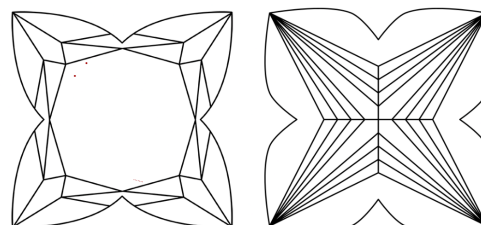
Comments: This Laboratory Grown Diamond was created by Chemical Vapor Deposition (CVD) growth process.
Type IIa

PROPORTIONS



Sample Image Used

CLARITY CHARACTERISTICS



KEY TO SYMBOLS

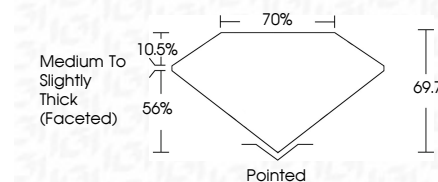
Red symbols indicate internal characteristics.
Green symbols indicate external characteristics.

COLOR

D E F G H I J Faint Very Light Light

CLARITY

| FL | IF | VVS ¹⁻² | VS ¹⁻² | SI ¹⁻² | I ¹⁻³ |
|----------|---------------------|-----------------------------|------------------------|-------------------|------------------|
| Flawless | Internally Flawless | Very Very Slightly Included | Very Slightly Included | Slightly Included | Included |



ADDITIONAL GRADING INFORMATION

Polish **EXCELLENT**

Symmetry **EXCELLENT**

Fluorescence **NONE**

Inscription(s) **IGI LG783617821**

Comments: This Laboratory Grown Diamond was created by Chemical Vapor Deposition (CVD) growth process.
Type IIa



| | | | |
|---------------------------|---------------------------|----------------|------------------------------------|
| April 15, 2026 | IGI Report No LG783617821 | 2.04 CARATS | E |
| FLOWER MODIFIED BRILLIANT | 7.21 X 7.19 X 5.01 MM | VVS 2 | 69.7% |
| Carat Weight | Color Grade | Depth | 70% |
| Clarity Grade | Table | Girdle | Medium to Slightly Thick (Faceted) |
| Culet | Polish | Symmetry | Fluorescence |
| EXCELLENT | EXCELLENT | EXCELLENT | NONE |
| None | None | Inscription(s) | IGI LG783617821 |

Comments: This Laboratory Grown Diamond was created by Chemical Vapor Deposition (CVD) growth process.
Type IIa