



**ELECTRONIC COPY**

LG783617725  
Report verification at [igi.org](http://igi.org)



April 20, 2026

IGI Report Number **LG783617725**

Description **LABORATORY GROWN DIAMOND**

Shape and Cutting Style **EMERALD CUT**

Measurements **8.53 X 5.79 X 4.24 MM**

**GRADING RESULTS**

Carat Weight **1.99 CARAT**

Color Grade **FANCY VIVID PINK**

Clarity Grade **VS 1**

April 20, 2026  
IGI Report Number **LG783617725**  
Description **LABORATORY GROWN DIAMOND**  
Shape and Cutting Style **EMERALD CUT**  
Measurements **8.53 X 5.79 X 4.24 MM**

**GRADING RESULTS**

Carat Weight **1.99 CARAT**

Color Grade **FANCY VIVID PINK**

Clarity Grade **VS 1**

**ADDITIONAL GRADING INFORMATION**

Polish **EXCELLENT**

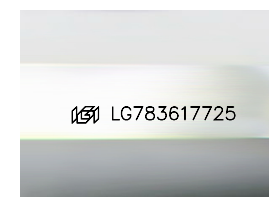
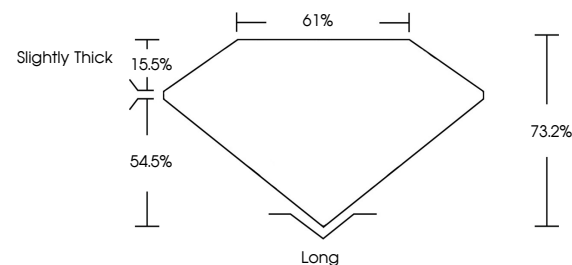
Symmetry **EXCELLENT**

Fluorescence **SLIGHT**

Inscription(s) **LG783617725**

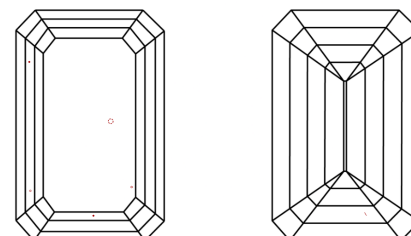
Comments: This Laboratory Grown Diamond was created by Chemical Vapor Deposition (CVD) growth process. Indications of post-growth treatment.

**PROPORTIONS**



Sample Image Used

**CLARITY CHARACTERISTICS**



**KEY TO SYMBOLS**

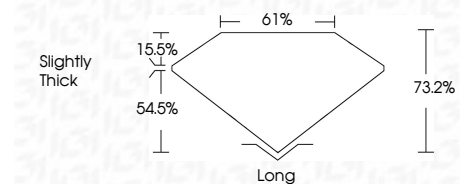
Red symbols indicate internal characteristics.  
Green symbols indicate external characteristics.

**COLOR**

D E F G H I J Faint Very Light Light

**CLARITY**

FL	IF	VS <sup>1-2</sup>	VS <sup>1-2</sup>	SI <sup>1-2</sup>	I <sup>1-3</sup>
Flawless	Internally Flawless	Very Very Slightly Included	Very Slightly Included	Slightly Included	Included



**ADDITIONAL GRADING INFORMATION**

Polish **EXCELLENT**

Symmetry **EXCELLENT**

Fluorescence **SLIGHT**

Inscription(s) **LG783617725**

Comments: This Laboratory Grown Diamond was created by Chemical Vapor Deposition (CVD) growth process. Indications of post-growth treatment.



**IGI**



April 20, 2026  
IGI Report No **LG783617725**  
**EMERALD CUT**  
Carat Weight **1.99 CARAT**  
Color Grade **FANCY VIVID PINK**  
Clarity Grade **VS 1**  
Depth **54.5%**  
Table **15.5%**  
Girdle **Slightly Thick**  
Culet **Long**  
Polish **EXCELLENT**  
Symmetry **EXCELLENT**  
Fluorescence **SLIGHT**  
Inscription(s) **LG783617725**  
Comments: This Laboratory Grown Diamond was created by Chemical Vapor Deposition (CVD) growth process. Indications of post-growth treatment.