



ELECTRONIC COPY

LG783616507
Report verification at igi.org



April 15, 2026
IGI Report Number **LG783616507**
Description **LABORATORY GROWN DIAMOND**
Shape and Cutting Style **CUT CORNERED
RECTANGULAR MODIFIED
BRILLIANT**
Measurements **9.48 X 6.52 X 4.44 MM**
GRADING RESULTS
Carat Weight **2.55 CARATS**
Color Grade **FANCY INTENSE YELLOW**
Clarity Grade **VS 1**

LABORATORY GROWN DIAMOND REPORT

April 15, 2026
IGI Report Number **LG783616507**
Description **LABORATORY GROWN DIAMOND**
Shape and Cutting Style **CUT CORNERED RECTANGULAR
MODIFIED BRILLIANT**
Measurements **9.48 X 6.52 X 4.44 MM**

GRADING RESULTS

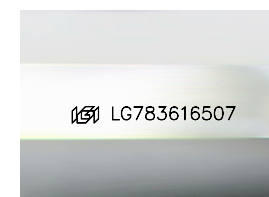
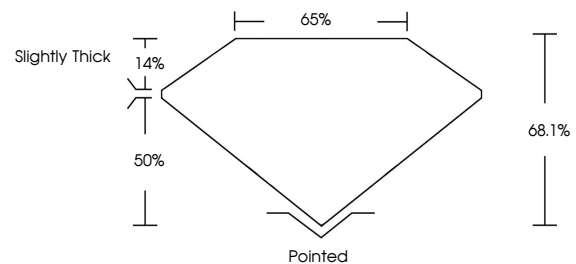
Carat Weight **2.55 CARATS**
Color Grade **FANCY INTENSE YELLOW**
Clarity Grade **VS 1**

ADDITIONAL GRADING INFORMATION

Polish **EXCELLENT**
Symmetry **EXCELLENT**
Fluorescence **NONE**
Inscription(s) **IGI LG783616507**

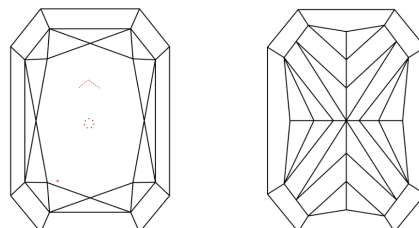
Comments: This Laboratory Grown Diamond was created by Chemical Vapor Deposition (CVD) growth process.

PROPORTIONS



Sample Image Used

CLARITY CHARACTERISTICS



KEY TO SYMBOLS

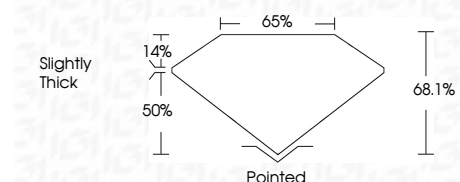
Red symbols indicate internal characteristics.
Green symbols indicate external characteristics.

COLOR

D E F G H I J Faint Very Light Light

CLARITY

FL	IF	VS ¹⁻²	VS ¹⁻²	SI ¹⁻²	I ¹⁻³
Flawless	Internally Flawless	Very Very Slightly Included	Very Slightly Included	Slightly Included	Included



ADDITIONAL GRADING INFORMATION

Polish **EXCELLENT**
Symmetry **EXCELLENT**
Fluorescence **NONE**
Inscription(s) **IGI LG783616507**
Comments: This Laboratory Grown Diamond was created by Chemical Vapor Deposition (CVD) growth process.



April 15, 2026
IGI Report No LG783616507
CUT CORNERED RECT. MODIFIED BRILLIANT
9.48 X 6.52 X 4.44 MM
2.55 CARATS
FANCY INTENSE YELLOW
VS 1
68.1%
50%
Slightly Thick
Pointed
EXCELLENT
EXCELLENT
NONE
IGI LG783616507
Comments: This Laboratory Grown Diamond was created by Chemical Vapor Deposition (CVD) growth process.