



ELECTRONIC COPY

LG783616505
Report verification at igi.org



April 28, 2026

IGI Report Number **LG783616505**

Description **LABORATORY GROWN DIAMOND**

Shape and Cutting Style **CUT CORNERED
RECTANGULAR MODIFIED
BRILLIANT**

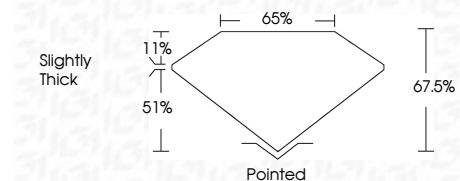
Measurements **9.18 X 6.52 X 4.40 MM**

GRADING RESULTS

Carat Weight **2.52 CARATS**

Color Grade **FANCY INTENSE YELLOW**

Clarity Grade **VVS 2**



ADDITIONAL GRADING INFORMATION

Polish **EXCELLENT**

Symmetry **EXCELLENT**

Fluorescence **NONE**

Inscription(s) **IGI LG783616505**

Comments: This Laboratory Grown Diamond was created by Chemical Vapor Deposition (CVD) growth process.



April 28, 2026
IGI Report No LG783616505
CUT CORNERED RECT. MODIFIED BRILLIANT
9.18 X 6.52 X 4.40 MM
2.52 CARATS
FANCY INTENSE YELLOW
VVS 2
67.5%
51%
Slightly Thick
Pointed
EXCELLENT
EXCELLENT
NONE
IGI LG783616505
Comments: This Laboratory Grown Diamond was created by Chemical Vapor Deposition (CVD) growth process.

LABORATORY GROWN DIAMOND REPORT

April 28, 2026

IGI Report Number **LG783616505**

Description **LABORATORY GROWN DIAMOND**

Shape and Cutting Style **CUT CORNERED RECTANGULAR
MODIFIED BRILLIANT**

Measurements **9.18 X 6.52 X 4.40 MM**

GRADING RESULTS

Carat Weight **2.52 CARATS**

Color Grade **FANCY INTENSE YELLOW**

Clarity Grade **VVS 2**

ADDITIONAL GRADING INFORMATION

Polish **EXCELLENT**

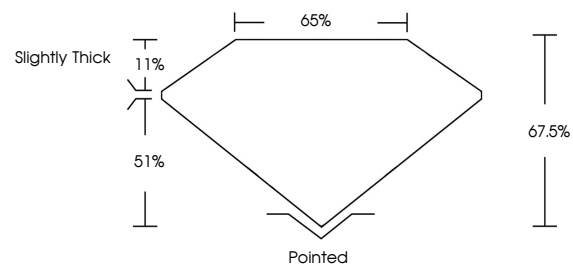
Symmetry **EXCELLENT**

Fluorescence **NONE**

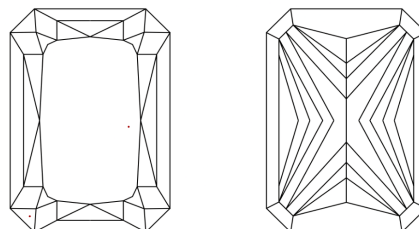
Inscription(s) **IGI LG783616505**

Comments: This Laboratory Grown Diamond was created by Chemical Vapor Deposition (CVD) growth process.

PROPORTIONS

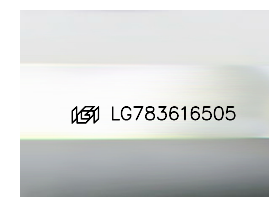


CLARITY CHARACTERISTICS



KEY TO SYMBOLS

Red symbols indicate internal characteristics.
Green symbols indicate external characteristics.



Sample Image Used

COLOR

D E F G H I J Faint Very Light Light

CLARITY

FL	IF	VVS ¹⁻²	VS ¹⁻²	SI ¹⁻²	I ¹⁻³
Flawless	Internally Flawless	Very Very Slightly Included	Very Slightly Included	Slightly Included	Included

