



ELECTRONIC COPY

LG783616495
Report verification at igi.org



April 15, 2026

IGI Report Number **LG783616495**

Description **LABORATORY GROWN DIAMOND**

Shape and Cutting Style **CUT CORNERED
RECTANGULAR MODIFIED
BRILLIANT**

Measurements **8.46 X 5.84 X 3.87 MM**

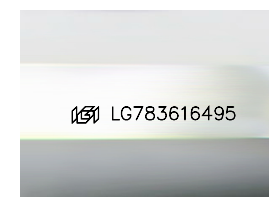
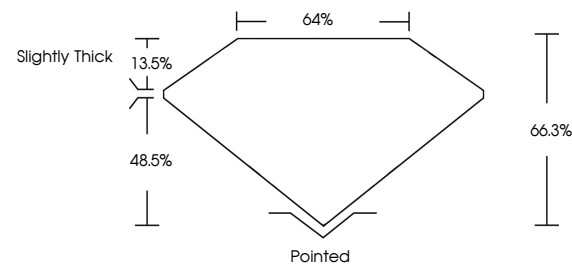
GRADING RESULTS

Carat Weight **1.76 CARAT**

Color Grade **FANCY INTENSE YELLOW**

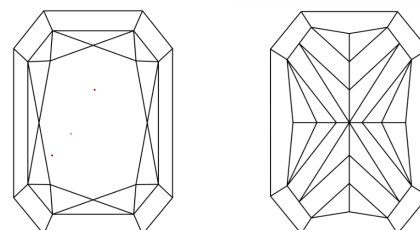
Clarity Grade **VVS 2**

PROPORTIONS



Sample Image Used

CLARITY CHARACTERISTICS



KEY TO SYMBOLS

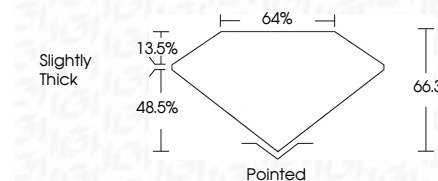
Red symbols indicate internal characteristics.
Green symbols indicate external characteristics.

COLOR

D E F G H I J Faint Very Light Light

CLARITY

FL	IF	VVS ¹⁻²	VS ¹⁻²	SI ¹⁻²	I ¹⁻³
Flawless	Internally Flawless	Very Very Slightly Included	Very Slightly Included	Slightly Included	Included



ADDITIONAL GRADING INFORMATION

Polish **EXCELLENT**

Symmetry **EXCELLENT**

Fluorescence **NONE**

Inscription(s) **IGI LG783616495**

Comments: This Laboratory Grown Diamond was created by Chemical Vapor Deposition (CVD) growth process.



IGI



April 15, 2026
IGI Report No LG783616495
CUT CORNERED RECT. MODIFIED BRILLIANT
8.46 X 5.84 X 3.87 MM
Carat Weight 1.76 CARAT
Color Grade FANCY INTENSE YELLOW
Clarity Grade VVS 2
Table 66.3%
Girdle 48%
Slightly Thick
Culet Pointed
Polish EXCELLENT
Symmetry EXCELLENT
Fluorescence NONE
Inscription(s) IGI LG783616495
Comments: This Laboratory Grown Diamond was created by Chemical Vapor Deposition (CVD) growth process.