



ELECTRONIC COPY

LG783616483
Report verification at igi.org



April 16, 2026

IGI Report Number **LG783616483**

Description **LABORATORY GROWN DIAMOND**

Shape and Cutting Style **HALF MOON BRILLIANT**

Measurements **5.29 X 6.43 X 3.54 MM**

GRADING RESULTS

Carat Weight **1.02 CARAT**

Color Grade **LIGHT YELLOW**

Clarity Grade **VS 1**

April 16, 2026

IGI Report Number **LG783616483**

Description **LABORATORY GROWN DIAMOND**

Shape and Cutting Style **HALF MOON BRILLIANT**

Measurements **5.29 X 6.43 X 3.54 MM**

GRADING RESULTS

Carat Weight **1.02 CARAT**

Color Grade **LIGHT YELLOW**

Clarity Grade **VS 1**

ADDITIONAL GRADING INFORMATION

Polish **EXCELLENT**

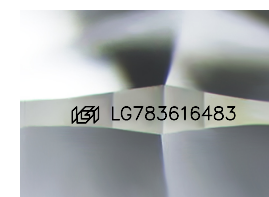
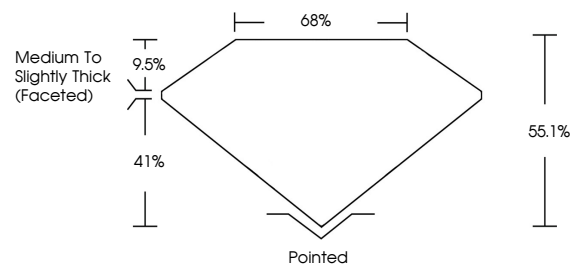
Symmetry **EXCELLENT**

Fluorescence **NONE**

Inscription(s) **IGI LG783616483**

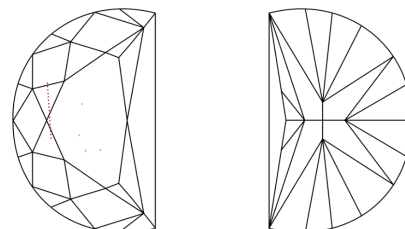
Comments: This Laboratory Grown Diamond was created by Chemical Vapor Deposition (CVD) growth process.

PROPORTIONS



Sample Image Used

CLARITY CHARACTERISTICS



KEY TO SYMBOLS

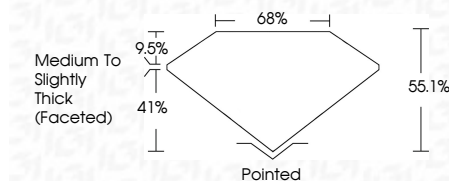
Red symbols indicate internal characteristics.
Green symbols indicate external characteristics.

COLOR

D E F G H I J Faint Very Light Light

CLARITY

FL	IF	VS ¹⁻²	VS ¹⁻²	SI ¹⁻²	I ¹⁻³
Flawless	Internally Flawless	Very Very Slightly Included	Very Slightly Included	Slightly Included	Included



ADDITIONAL GRADING INFORMATION

Polish **EXCELLENT**

Symmetry **EXCELLENT**

Fluorescence **NONE**

Inscription(s) **IGI LG783616483**

Comments: This Laboratory Grown Diamond was created by Chemical Vapor Deposition (CVD) growth process.



April 16, 2026
IGI Report No LG783616483
HALF MOON BRILLIANT
Carat Weight **1.02 CARAT**
Color Grade **LIGHT YELLOW**
Clarity Grade **VS 1**
Depth **41%**
Table **9.5%**
Girdle **Medium to Slightly Thick (Faceted)**
Culet **Pointed**
Polish **EXCELLENT**
Symmetry **EXCELLENT**
Fluorescence **NONE**
Inscription(s) **IGI LG783616483**

Comments: This Laboratory Grown Diamond was created by Chemical Vapor Deposition (CVD) growth process.