



ELECTRONIC COPY

LG783616472
Report verification at igi.org



April 16, 2026

IGI Report Number LG783616472

Description LABORATORY GROWN DIAMOND

Shape and Cutting Style HEART MODIFIED BRILLIANT

Measurements 8.20 X 9.24 X 4.66 MM

GRADING RESULTS

Carat Weight 2.54 CARATS

Color Grade FANCY VIVID PINK

Clarity Grade VS 1

April 16, 2026

IGI Report Number LG783616472

Description LABORATORY GROWN DIAMOND

Shape and Cutting Style HEART MODIFIED BRILLIANT

Measurements 8.20 X 9.24 X 4.66 MM

GRADING RESULTS

Carat Weight 2.54 CARATS

Color Grade FANCY VIVID PINK

Clarity Grade VS 1

ADDITIONAL GRADING INFORMATION

Polish EXCELLENT

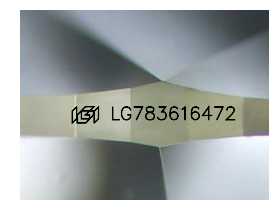
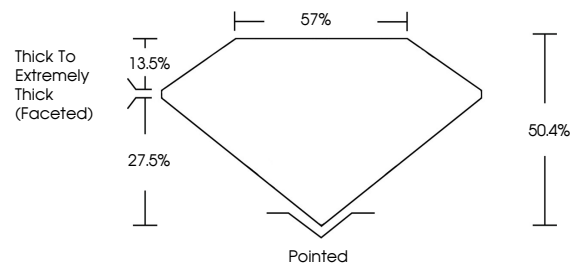
Symmetry EXCELLENT

Fluorescence SLIGHT

Inscription(s) IGI LG783616472

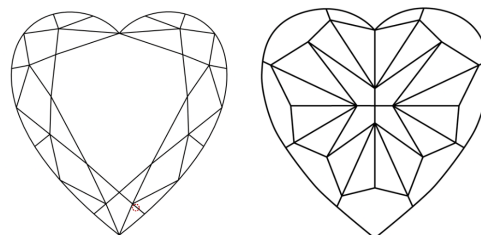
Comments: This Laboratory Grown Diamond was created by Chemical Vapor Deposition (CVD) growth process. Indications of post-growth treatment.

PROPORTIONS



Sample Image Used

CLARITY CHARACTERISTICS



KEY TO SYMBOLS

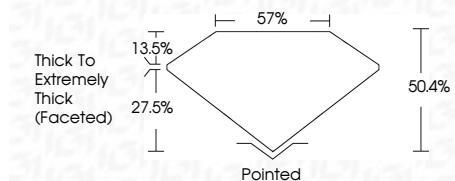
Red symbols indicate internal characteristics. Green symbols indicate external characteristics.

COLOR

D E F G H I J Faint Very Light Light

CLARITY

FL IF VS 1-2 VS 2-3 SI 1-2 I 1-3
Flawless Internally Flawless Very Very Slightly Included Very Slightly Included Slightly Included Included



ADDITIONAL GRADING INFORMATION

Polish EXCELLENT

Symmetry EXCELLENT

Fluorescence SLIGHT

Inscription(s) IGI LG783616472

Comments: This Laboratory Grown Diamond was created by Chemical Vapor Deposition (CVD) growth process. Indications of post-growth treatment.



Summary of report details including date, report number, description, measurements, grading results, and additional information.

Comments: This Laboratory Grown Diamond was created by Chemical Vapor Deposition (CVD) growth process. Indications of post-growth treatment.