



**ELECTRONIC COPY**

LG783615124  
Report verification at igi.org



April 7, 2026

IGI Report Number **LG783615124**

Description **LABORATORY GROWN DIAMOND**

Shape and Cutting Style **ROUND BRILLIANT**

Measurements **7.29 - 7.33 X 4.57 MM**

**GRADING RESULTS**

Carat Weight **1.51 CARAT**

Color Grade **G**

Clarity Grade **VS 1**

Cut Grade **EXCELLENT**

April 7, 2026  
IGI Report Number **LG783615124**  
Description **LABORATORY GROWN DIAMOND**  
Shape and Cutting Style **ROUND BRILLIANT**  
Measurements **7.29 - 7.33 X 4.57 MM**

**GRADING RESULTS**

Carat Weight **1.51 CARAT**

Color Grade **G**

Clarity Grade **VS 1**

Cut Grade **EXCELLENT**

**ADDITIONAL GRADING INFORMATION**

Polish **EXCELLENT**

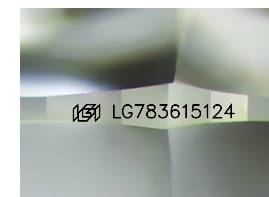
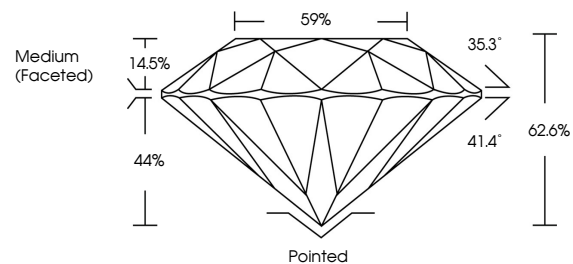
Symmetry **EXCELLENT**

Fluorescence **NONE**

Inscription(s) **IGI LG783615124**

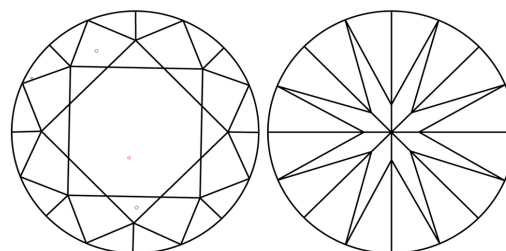
Comments: This Laboratory Grown Diamond was created by Chemical Vapor Deposition (CVD) growth process.  
Type IIa

**PROPORTIONS**



Sample Image Used

**CLARITY CHARACTERISTICS**



**KEY TO SYMBOLS**

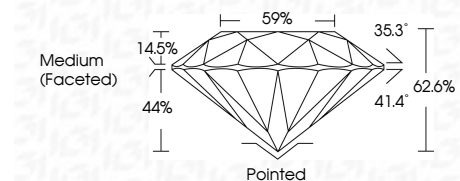
Red symbols indicate internal characteristics.  
Green symbols indicate external characteristics.

**COLOR**

D E F G H I J Faint Very Light Light

**CLARITY**

FL	IF	VS <sup>1-2</sup>	VS <sup>1-2</sup>	SI <sup>1-2</sup>	I <sup>1-3</sup>
Flawless	Internally Flawless	Very Very Slightly Included	Very Slightly Included	Slightly Included	Included



**ADDITIONAL GRADING INFORMATION**

Polish **EXCELLENT**

Symmetry **EXCELLENT**

Fluorescence **NONE**

Inscription(s) **IGI LG783615124**

Comments: This Laboratory Grown Diamond was created by Chemical Vapor Deposition (CVD) growth process.  
Type IIa



**IGI**



April 7, 2026  
IGI Report No LG783615124  
**ROUND BRILLIANT**  
Carat Weight **1.51 CARAT**  
Color Grade **G**  
Clarity Grade **VS 1**  
Depth **62.6%**  
Table **59%**  
Girdle **Medium (Faceted)**  
Culet **Pointed**  
Polish **EXCELLENT**  
Symmetry **EXCELLENT**  
Fluorescence **NONE**  
Inscription(s) **IGI LG783615124**  
Comments: This Laboratory Grown Diamond was created by Chemical Vapor Deposition (CVD) growth process.  
Type IIa