



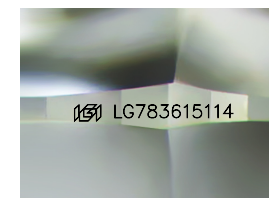
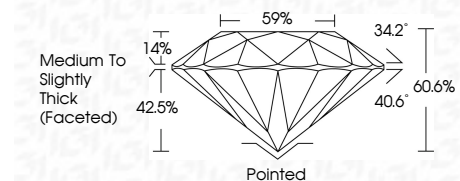
ELECTRONIC COPY

LG783615114
Report verification at igi.org



April 7, 2026
IGI Report Number **LG783615114**
Description **LABORATORY GROWN DIAMOND**
Shape and Cutting Style **ROUND BRILLIANT**
Measurements **7.34 - 7.40 X 4.47 MM**

GRADING RESULTS
Carat Weight **1.51 CARAT**
Color Grade **F**
Clarity Grade **VS 1**
Cut Grade **IDEAL**



Sample Image Used

ADDITIONAL GRADING INFORMATION
Polish **EXCELLENT**
Symmetry **EXCELLENT**
Fluorescence **NONE**
Inscription(s) **IGI LG783615114**
Comments: This Laboratory Grown Diamond was created by Chemical Vapor Deposition (CVD) growth process. Type IIa



April 7, 2026
IGI Report No **LG783615114**
ROUND BRILLIANT
Carat Weight **1.51 CARAT**
Color Grade **F**
Clarity Grade **VS 1**
Cut Grade **IDEAL**
Depth **60.6%**
Table **59%**
Girdle **Medium To Slightly Thick (Faceted)**
Culet **Pointed**
Polish **EXCELLENT**
Symmetry **EXCELLENT**
Fluorescence **NONE**
Inscription(s) **IGI LG783615114**
Comments: This Laboratory Grown Diamond was created by Chemical Vapor Deposition (CVD) growth process. Type IIa

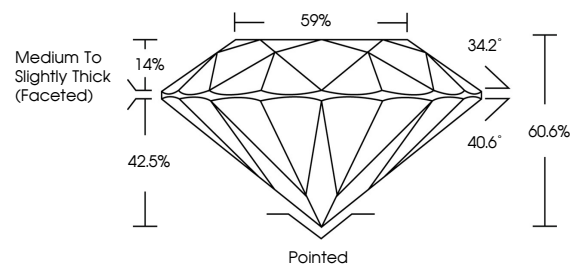
April 7, 2026
IGI Report Number **LG783615114**
Description **LABORATORY GROWN DIAMOND**
Shape and Cutting Style **ROUND BRILLIANT**
Measurements **7.34 - 7.40 X 4.47 MM**

GRADING RESULTS
Carat Weight **1.51 CARAT**
Color Grade **F**
Clarity Grade **VS 1**
Cut Grade **IDEAL**

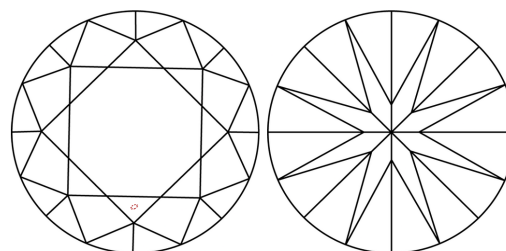
ADDITIONAL GRADING INFORMATION
Polish **EXCELLENT**
Symmetry **EXCELLENT**
Fluorescence **NONE**
Inscription(s) **IGI LG783615114**

Comments: This Laboratory Grown Diamond was created by Chemical Vapor Deposition (CVD) growth process. Type IIa

PROPORTIONS



CLARITY CHARACTERISTICS



KEY TO SYMBOLS

Red symbols indicate internal characteristics.
Green symbols indicate external characteristics.

COLOR

D E F G H I J Faint Very Light Light

CLARITY

FL IF VS¹⁻² VS¹⁻² SI¹⁻² I¹⁻³
Flawless Internally Flawless Very Very Slightly Included Very Slightly Included Slightly Included Included

