



ELECTRONIC COPY

LG783614119
Report verification at igi.org



June 15, 2026
IGI Report Number **LG783614119**
Description **LABORATORY GROWN DIAMOND**
Shape and Cutting Style **MODIFIED NONAGON STEP CUT**
Measurements **9.10 X 5.32 X 2.96 MM**
GRADING RESULTS
Carat Weight **1.06 CARAT**
Color Grade **E**
Clarity Grade **VVS 2**

June 15, 2026
IGI Report Number **LG783614119**
Description **LABORATORY GROWN DIAMOND**
Shape and Cutting Style **MODIFIED NONAGON STEP CUT**
Measurements **9.10 X 5.32 X 2.96 MM**

GRADING RESULTS

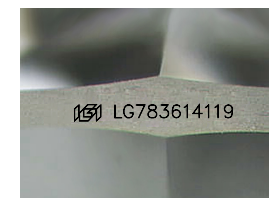
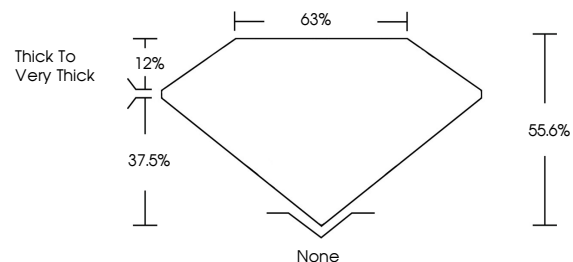
Carat Weight **1.06 CARAT**
Color Grade **E**
Clarity Grade **VVS 2**

ADDITIONAL GRADING INFORMATION

Polish **EXCELLENT**
Symmetry **EXCELLENT**
Fluorescence **NONE**
Inscription(s) **IGI LG783614119**

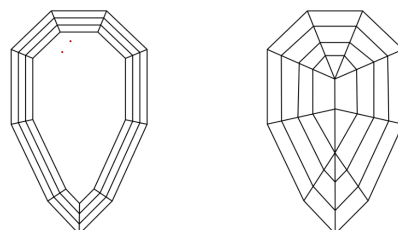
Comments: This Laboratory Grown Diamond was created by Chemical Vapor Deposition (CVD) growth process.
Type IIa

PROPORTIONS



Sample Image Used

CLARITY CHARACTERISTICS



KEY TO SYMBOLS

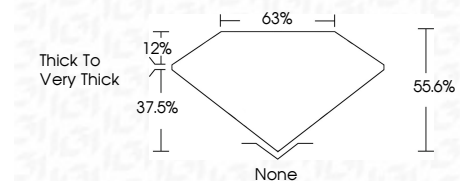
Red symbols indicate internal characteristics.
Green symbols indicate external characteristics.

COLOR

D E F G H I J Faint Very Light Light

CLARITY

FL	IF	VVS ¹⁻²	VS ¹⁻²	SI ¹⁻²	I ¹⁻³
Flawless	Internally Flawless	Very Very Slightly Included	Very Slightly Included	Slightly Included	Included



ADDITIONAL GRADING INFORMATION

Polish **EXCELLENT**
Symmetry **EXCELLENT**
Fluorescence **NONE**
Inscription(s) **IGI LG783614119**
Comments: This Laboratory Grown Diamond was created by Chemical Vapor Deposition (CVD) growth process.
Type IIa



IGI



June 15, 2026
IGI Report No LG783614119
MODIFIED NONAGON STEP CUT
9.10 X 5.32 X 2.96 MM
1.06 CARAT
E
VVS 2
55.6%
37.5%
63%
Thick to Very Thick
None
EXCELLENT
EXCELLENT
NONE
IGI LG783614119
Comments: This Laboratory Grown Diamond was created by Chemical Vapor Deposition (CVD) growth process.
Type IIa