



ELECTRONIC COPY

LG783613947
Report verification at igi.org



June 12, 2026
IGI Report Number **LG783613947**
Description **LABORATORY GROWN DIAMOND**
Shape and Cutting Style **CUSHION MODIFIED BRILLIANT**
Measurements **9.01 X 6.46 X 3.66 MM**
GRADING RESULTS
Carat Weight **1.91 CARAT**
Color Grade **LIGHT BROWN**
Clarity Grade **VS 1**

LABORATORY GROWN DIAMOND REPORT

June 12, 2026
IGI Report Number **LG783613947**
Description **LABORATORY GROWN DIAMOND**
Shape and Cutting Style **CUSHION MODIFIED BRILLIANT**
Measurements **9.01 X 6.46 X 3.66 MM**

GRADING RESULTS

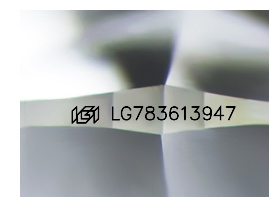
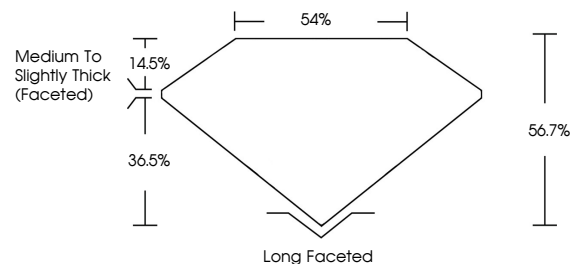
Carat Weight **1.91 CARAT**
Color Grade **LIGHT BROWN**
Clarity Grade **VS 1**

ADDITIONAL GRADING INFORMATION

Polish **EXCELLENT**
Symmetry **EXCELLENT**
Fluorescence **NONE**
Inscription(s) **IGI LG783613947**

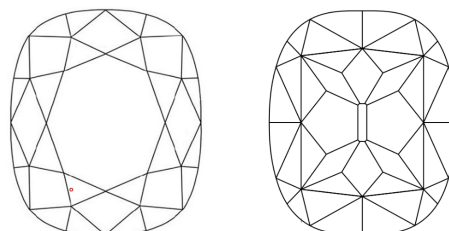
Comments: This Laboratory Grown Diamond was created by Chemical Vapor Deposition (CVD) growth process.
Type IIa

PROPORTIONS



Sample Image Used

CLARITY CHARACTERISTICS



KEY TO SYMBOLS

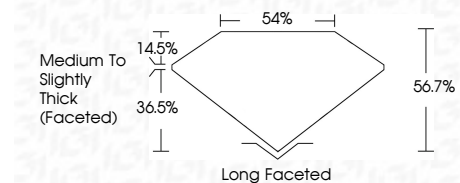
Red symbols indicate internal characteristics.
Green symbols indicate external characteristics.

COLOR

D E F G H I J Faint Very Light Light

CLARITY

FL	IF	VS ¹⁻²	VS ¹⁻²	SI ¹⁻²	I ¹⁻³
Flawless	Internally Flawless	Very Very Slightly Included	Very Slightly Included	Slightly Included	Included



ADDITIONAL GRADING INFORMATION

Polish **EXCELLENT**
Symmetry **EXCELLENT**
Fluorescence **NONE**
Inscription(s) **IGI LG783613947**
Comments: This Laboratory Grown Diamond was created by Chemical Vapor Deposition (CVD) growth process.
Type IIa



IGI



June 12, 2026
IGI Report No. LG783613947
CUSHION MODIFIED BRILLIANT

9.01 X 6.46 X 3.66 MM
1.91 CARAT
LIGHT BROWN
VS 1
56.7%
36.5%
14.5%
Medium to Slightly Thick (Faceted)
Long Faceted
EXCELLENT
EXCELLENT
NONE
IGI LG783613947

Comments: This Laboratory Grown Diamond was created by Chemical Vapor Deposition (CVD) growth process.
Type IIa