



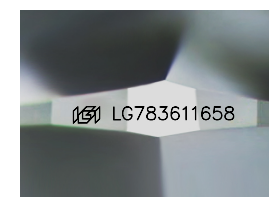
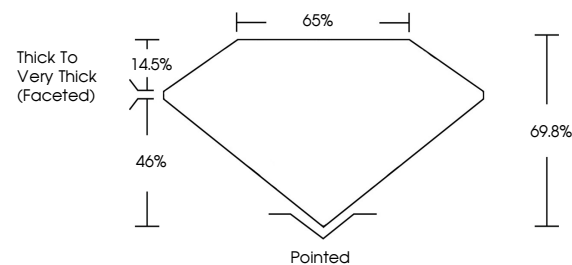
**ELECTRONIC COPY**

LG783611658  
Report verification at igi.org



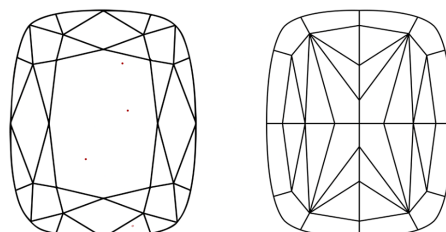
March 18, 2026  
IGI Report Number **LG783611658**  
Description **LABORATORY GROWN DIAMOND**  
Shape and Cutting Style **CUSHION MODIFIED BRILLIANT**  
Measurements **9.07 X 6.79 X 4.74 MM**  
**GRADING RESULTS**  
Carat Weight **2.62 CARATS**  
Color Grade **FANCY INTENSE YELLOW**  
Clarity Grade **VVS 2**

**PROPORTIONS**



Sample Image Used

**CLARITY CHARACTERISTICS**



**KEY TO SYMBOLS**

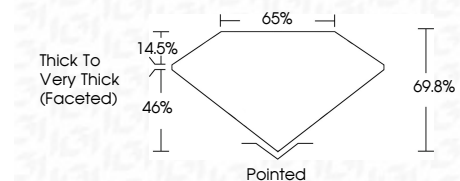
Red symbols indicate internal characteristics.  
Green symbols indicate external characteristics.

**COLOR**

D E F G H I J Faint Very Light Light

**CLARITY**

FL	IF	VVS <sup>1-2</sup>	VS <sup>1-2</sup>	SI <sup>1-2</sup>	I <sup>1-3</sup>
Flawless	Internally Flawless	Very Very Slightly Included	Very Slightly Included	Slightly Included	Included



**ADDITIONAL GRADING INFORMATION**

Polish **EXCELLENT**  
Symmetry **EXCELLENT**  
Fluorescence **NONE**  
Inscription(s) **IGI LG783611658**  
Comments: This Laboratory Grown Diamond was created by Chemical Vapor Deposition (CVD) growth process.



March 18, 2026  
IGI Report No LG783611658  
**CUSHION MODIFIED BRILLIANT**  
9.07 X 6.79 X 4.74 MM  
2.62 CARATS  
FANCY INTENSE YELLOW  
VVS 2  
69.8%  
46%  
14.5%  
Thick to Very Thick (Faceted)  
Pointed  
EXCELLENT  
EXCELLENT  
NONE  
IGI LG783611658  
Comments: This Laboratory Grown Diamond was created by Chemical Vapor Deposition (CVD) growth process.