



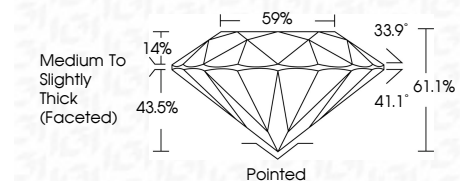
ELECTRONIC COPY

LG783610450 Report verification at igi.org



March 19, 2026 IGI Report Number LG783610450 Description LABORATORY GROWN DIAMOND Shape and Cutting Style ROUND BRILLIANT Measurements 8.10 - 8.13 X 4.96 MM

GRADING RESULTS Carat Weight 1.99 CARAT Color Grade D Clarity Grade VVS 2 Cut Grade IDEAL

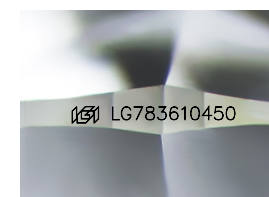


ADDITIONAL GRADING INFORMATION Polish EXCELLENT Symmetry EXCELLENT Fluorescence NONE Inscription(s) LG783610450 Comments: This Laboratory Grown Diamond was created by Chemical Vapor Deposition (CVD) growth process. Type IIa



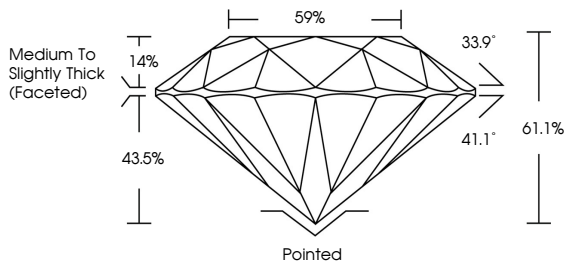
March 19, 2026 IGI Report No LG783610450 ROUND BRILLIANT 8.10 - 8.13 X 4.96 MM 1.99 CARAT D VVS 2 IDEAL 61.1% 59% Medium To Slightly Thick (Faceted) Pointed EXCELLENT EXCELLENT NONE LG783610450

Comments: This Laboratory Grown Diamond was created by Chemical Vapor Deposition (CVD) growth process. Type IIa

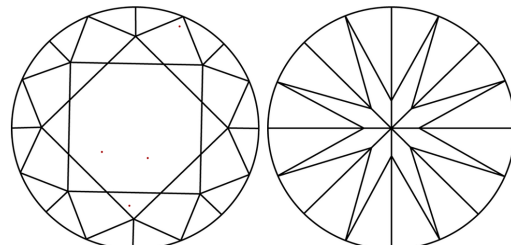


Sample Image Used

PROPORTIONS



CLARITY CHARACTERISTICS



KEY TO SYMBOLS Red symbols indicate internal characteristics. Green symbols indicate external characteristics.

COLOR

Color scale table with categories D, E, F, G, H, I, J, Faint, Very Light, Light

CLARITY

Clarity scale table with categories FL, IF, VVS 1-2, VS 1-2, SI 1-2, I 1-3, Flawless, Internally Flawless, Very Very Slightly Included, Very Slightly Included, Slightly Included, Included



March 19, 2026 IGI Report Number LG783610450 Description LABORATORY GROWN DIAMOND Shape and Cutting Style ROUND BRILLIANT Measurements 8.10 - 8.13 X 4.96 MM

GRADING RESULTS Carat Weight 1.99 CARAT Color Grade D Clarity Grade VVS 2 Cut Grade IDEAL

ADDITIONAL GRADING INFORMATION Polish EXCELLENT Symmetry EXCELLENT Fluorescence NONE Inscription(s) LG783610450

Comments: This Laboratory Grown Diamond was created by Chemical Vapor Deposition (CVD) growth process. Type IIa