



ELECTRONIC COPY

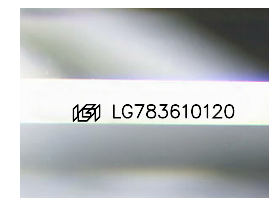
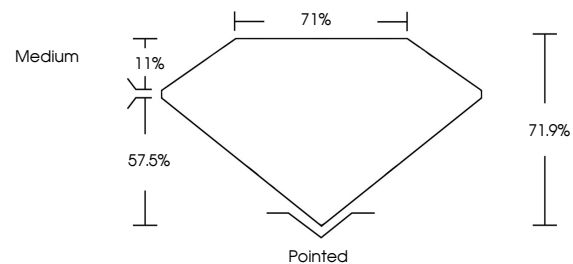
LG783610120
Report verification at igi.org



March 18, 2026
IGI Report Number **LG783610120**
Description **LABORATORY GROWN DIAMOND**
Shape and Cutting Style **PRINCESS CUT**
Measurements **7.00 X 6.88 X 4.95 MM**
GRADING RESULTS
Carat Weight **2.09 CARATS**
Color Grade **D**
Clarity Grade **VVS 2**

March 18, 2026
IGI Report Number **LG783610120**
Description **LABORATORY GROWN DIAMOND**
Shape and Cutting Style **PRINCESS CUT**
Measurements **7.00 X 6.88 X 4.95 MM**

PROPORTIONS

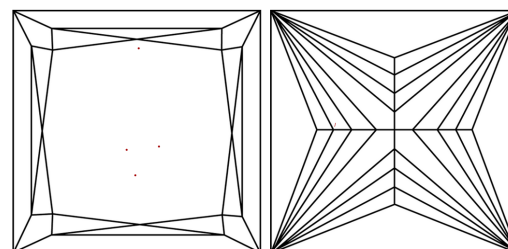


Sample Image Used

GRADING RESULTS

Carat Weight **2.09 CARATS**
Color Grade **D**
Clarity Grade **VVS 2**

CLARITY CHARACTERISTICS



KEY TO SYMBOLS

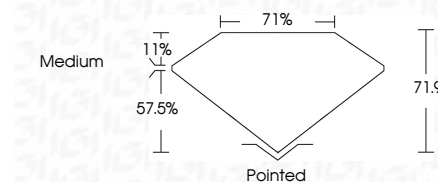
Red symbols indicate internal characteristics.
Green symbols indicate external characteristics.

COLOR

D E F G H I J Faint Very Light Light

CLARITY

FL	IF	VVS ¹⁻²	VS ¹⁻²	SI ¹⁻²	I ¹⁻³
Flawless	Internally Flawless	Very Very Slightly Included	Very Slightly Included	Slightly Included	Included



ADDITIONAL GRADING INFORMATION

Polish **EXCELLENT**
Symmetry **EXCELLENT**
Fluorescence **NONE**
Inscription(s) **IGI LG783610120**
Comments: This Laboratory Grown Diamond was created by Chemical Vapor Deposition (CVD) growth process. Type IIa

ADDITIONAL GRADING INFORMATION

Polish **EXCELLENT**
Symmetry **EXCELLENT**
Fluorescence **NONE**
Inscription(s) **IGI LG783610120**

Comments: This Laboratory Grown Diamond was created by Chemical Vapor Deposition (CVD) growth process. Type IIa



March 18, 2026
IGI Report No LG783610120
PRINCESS CUT
7.00 X 6.88 X 4.95 MM
2.09 CARATS
D
Color Grade
VVS 2
Depth 71.9%
Table 71%
Girdle Medium
Pointed
Culet
Polish EXCELLENT
Symmetry EXCELLENT
Fluorescence NONE
Inscription(s) IGI LG783610120
Comments: This Laboratory Grown Diamond was created by Chemical Vapor Deposition (CVD) growth process. Type IIa