



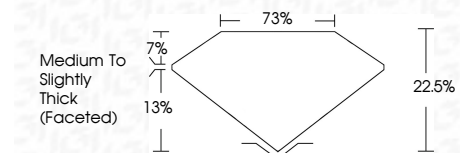
ELECTRONIC COPY

LG783607718
Report verification at igi.org



March 19, 2026
IGI Report Number LG783607718
Description LABORATORY GROWN DIAMOND
Shape and Cutting Style ROUND ROSE CUT
Measurements 11.43 - 11.63 X 2.62 MM

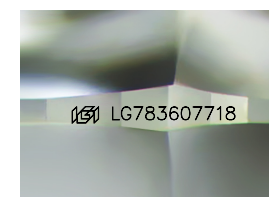
GRADING RESULTS
Carat Weight 3.06 CARATS
Color Grade E
Clarity Grade VS 2



ADDITIONAL GRADING INFORMATION
Polish VERY GOOD
Symmetry GOOD
Fluorescence NONE
Inscription(s) IGI LG783607718
Comments: This Laboratory Grown Diamond was created by Chemical Vapor Deposition (CVD) growth process. Type IIa

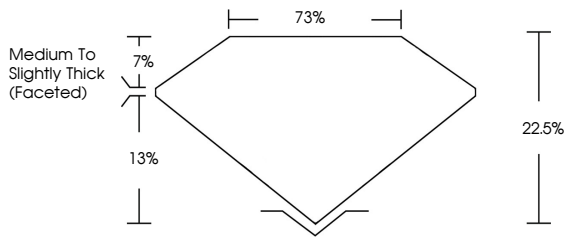


March 19, 2026
IGI Report No LG783607718
ROUND ROSE CUT
3.06 CARATS E
Carat Weight 3.06 CARATS
Color Grade E
Clarity Grade VS 2
Depth 22.5%
Table 73%
Girdle Medium to Slightly Thick (Faceted)
Culet NONE
Polish VERY GOOD
Symmetry GOOD
Fluorescence NONE
Inscription(s) IGI LG783607718
Comments: This Laboratory Grown Diamond was created by Chemical Vapor Deposition (CVD) growth process. Type IIa

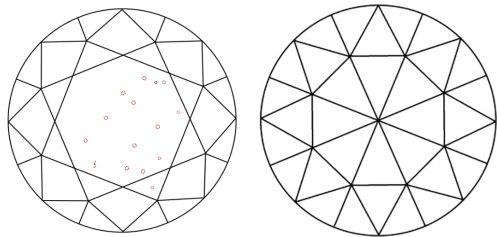


Sample Image Used

PROPORTIONS



CLARITY CHARACTERISTICS



KEY TO SYMBOLS
Red symbols indicate internal characteristics.
Green symbols indicate external characteristics.

COLOR

Table with color scale: D, E, F, G, H, I, J, Faint, Very Light, Light

CLARITY

Table with clarity scale: FL, IF, VS 1-2, VS 1-2, SI 1-2, I 1-3, Flawless, Internally Flawless, Very Very Slightly Included, Very Slightly Included, Slightly Included, Included

