



ELECTRONIC COPY

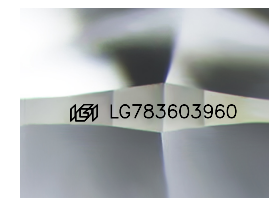
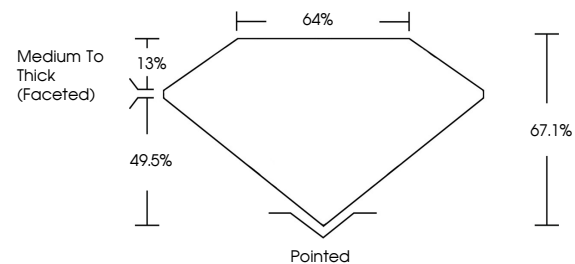
LG783603960
Report verification at igi.org



March 18, 2026
IGI Report Number **LG783603960**
Description **LABORATORY GROWN DIAMOND**
Shape and Cutting Style **CUSHION MODIFIED BRILLIANT**
Measurements **9.82 X 7.64 X 5.13 MM**
GRADING RESULTS
Carat Weight **3.07 CARATS**
Color Grade **F**
Clarity Grade **VVS 2**

March 18, 2026
IGI Report Number **LG783603960**
Description **LABORATORY GROWN DIAMOND**
Shape and Cutting Style **CUSHION MODIFIED BRILLIANT**
Measurements **9.82 X 7.64 X 5.13 MM**

PROPORTIONS

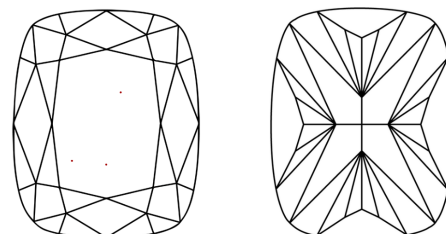


Sample Image Used

GRADING RESULTS

Carat Weight **3.07 CARATS**
Color Grade **F**
Clarity Grade **VVS 2**

CLARITY CHARACTERISTICS



KEY TO SYMBOLS

Red symbols indicate internal characteristics.
Green symbols indicate external characteristics.

ADDITIONAL GRADING INFORMATION

Polish **EXCELLENT**
Symmetry **EXCELLENT**
Fluorescence **NONE**
Inscription(s) **IGI LG783603960**

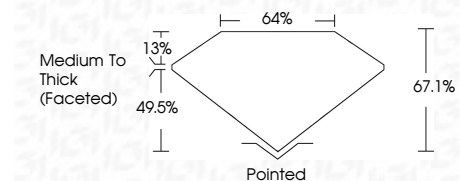
Comments: This Laboratory Grown Diamond was created by Chemical Vapor Deposition (CVD) growth process.
Type IIa

COLOR

D E F G H I J Faint Very Light Light

CLARITY

FL	IF	VVS ¹⁻²	VS ¹⁻²	SI ¹⁻²	I ¹⁻³
Flawless	Internally Flawless	Very Very Slightly Included	Very Slightly Included	Slightly Included	Included



ADDITIONAL GRADING INFORMATION

Polish **EXCELLENT**
Symmetry **EXCELLENT**
Fluorescence **NONE**
Inscription(s) **IGI LG783603960**
Comments: This Laboratory Grown Diamond was created by Chemical Vapor Deposition (CVD) growth process.
Type IIa



March 18, 2026
IGI Report No **LG783603960**
CUSHION MODIFIED BRILLIANT
9.82 X 7.64 X 5.13 MM
3.07 CARATS **F**
Carat Weight **VVS 2**
Color Grade **67.1%**
Clarity Grade **49.5%**
Table
Girdle
Medium To Thick (Faceted)
Culet
Pointed
Polish **EXCELLENT**
Symmetry **EXCELLENT**
Fluorescence **NONE**
Inscription(s) **IGI LG783603960**
Comments: This Laboratory Grown Diamond was created by Chemical Vapor Deposition (CVD) growth process.
Type IIa