



May 5, 2026

IGI Report Number **LG783603778**

OVAL BRILLIANT
LABORATORY GROWN DIAMOND
7.81 X 5.41 X 3.38 MM

Carat Weight **0.90 CARAT**
Color Grade **FANCY VIVID BLUE**
Clarity Grade **VS 1**
Polish **VERY GOOD**
Symmetry **EXCELLENT**
Fluorescence **NONE**
Inscription(s) **IGI LG783603778**

Comments: This Laboratory Grown Diamond was created by Chemical Vapor Deposition (CVD) growth process. Indications of post-growth treatment.
Secondary color: Green

LABORATORY GROWN DIAMOND REPORT

May 5, 2026
IGI Report Number **LG783603778**
Description **LABORATORY GROWN DIAMOND**
Shape and Cutting Style **OVAL BRILLIANT**
Measurements **7.81 X 5.41 X 3.38 MM**

GRADING RESULTS

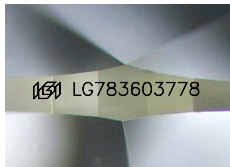
Carat Weight **0.90 CARAT**
Color Grade **FANCY VIVID BLUE**
Clarity Grade **VS 1**

ADDITIONAL GRADING INFORMATION

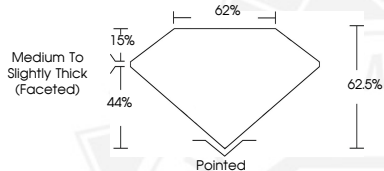
Polish **VERY GOOD**
Symmetry **EXCELLENT**
Fluorescence **NONE**
Inscription(s) **IGI LG783603778**

Comments: This Laboratory Grown Diamond was created by Chemical Vapor Deposition (CVD) growth process.
Indications of post-growth treatment.

Secondary color: Green



Sample Image Used



May 5, 2026

IGI Report Number **LG783603778**

OVAL BRILLIANT
LABORATORY GROWN DIAMOND
7.81 X 5.41 X 3.38 MM

Carat Weight **0.90 CARAT**
Color Grade **FANCY VIVID BLUE**
Clarity Grade **VS 1**
Polish **VERY GOOD**
Symmetry **EXCELLENT**
Fluorescence **NONE**
Inscription(s) **IGI LG783603778**

Comments: This Laboratory Grown Diamond was created by Chemical Vapor Deposition (CVD) growth process. Indications of post-growth treatment.
Secondary color: Green



THIS DOCUMENT WAS PRODUCED WITH THE FOLLOWING SECURITY MEASURES: SPECIAL DOCUMENT PAPER, INK SCREENS, WATERMARK, BACKGROUND DESIGNS, HOLOGRAM AND OTHER SECURITY FEATURES NOT LISTED AND DO EXCEED DOCUMENT SECURITY INDUSTRY GUIDELINES.