



LABORATORY GROWN DIAMOND REPORT

April 23, 2026
 IGI Report Number **LG783603177**
 Description **LABORATORY GROWN DIAMOND**
 Shape and Cutting Style **HEART BRILLIANT**
 Measurements **5.48 X 5.29 X 3.23 MM**

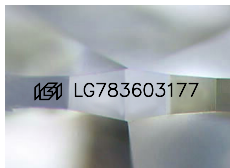
GRADING RESULTS

Carat Weight **0.54 CARAT**
 Color Grade **D**
 Clarity Grade **VVS 2**

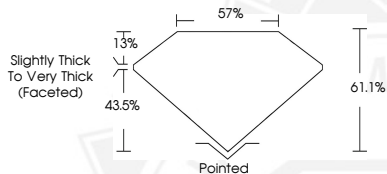
ADDITIONAL GRADING INFORMATION

Polish **VERY GOOD**
 Symmetry **VERY GOOD**
 Fluorescence **NONE**
 Inscription(s) **IGI LG783603177**

Comments: As Grown - No indication of post-growth treatment.
 This Laboratory Grown Diamond was created by High Pressure High Temperature (HPHT) growth process.
 Type II



Sample Image Used



April 23, 2026
 IGI Report Number **LG783603177**
HEART BRILLIANT
LABORATORY GROWN DIAMOND
5.48 X 5.29 X 3.23 MM
 Carat Weight **0.54 CARAT**
 Color Grade **D**
 Clarity Grade **VVS 2**
 Polish **VERY GOOD**
 Symmetry **VERY GOOD**
 Fluorescence **NONE**
 Inscription(s) **IGI LG783603177**

Comments: As Grown - No indication of post-growth treatment. This Laboratory Grown Diamond was created by High Pressure High Temperature (HPHT) growth process. Type II



April 23, 2026
 IGI Report Number **LG783603177**
HEART BRILLIANT
LABORATORY GROWN DIAMOND
5.48 X 5.29 X 3.23 MM
 Carat Weight **0.54 CARAT**
 Color Grade **D**
 Clarity Grade **VVS 2**
 Polish **VERY GOOD**
 Symmetry **VERY GOOD**
 Fluorescence **NONE**
 Inscription(s) **IGI LG783603177**

Comments: As Grown - No indication of post-growth treatment. This Laboratory Grown Diamond was created by High Pressure High Temperature (HPHT) growth process. Type II



THIS DOCUMENT WAS PRODUCED WITH THE FOLLOWING SECURITY MEASURES: SPECIAL DOCUMENT PAPER, INK SCREENS, WATERMARK, BACKGROUND DESIGNS, HOLOGRAM AND OTHER SECURITY FEATURES NOT LISTED AND DO EXCEED DOCUMENT SECURITY INDUSTRY GUIDELINES.