



**INTERNATIONAL  
GEMOLOGICAL  
INSTITUTE**

**LABORATORY GROWN DIAMOND REPORT**

April 24, 2026  
 IGI Report Number **LG783603013**  
 Description **LABORATORY GROWN DIAMOND**  
 Shape and Cutting Style **ROUND BRILLIANT**  
 Measurements **5.28 - 5.33 X 3.19 MM**

**GRADING RESULTS**

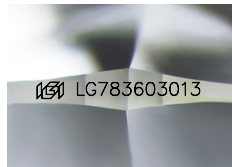
Carat Weight **0.55 CARAT**  
 Color Grade **FANCY INTENSE BROWNISH ORANGE**  
 Clarity Grade **VVS 2**  
 Cut Grade **VERY GOOD**

**ADDITIONAL GRADING INFORMATION**

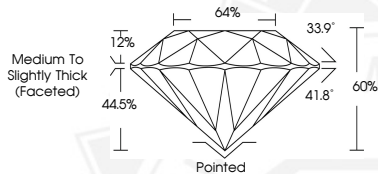
Polish **FAIR**  
 Symmetry **GOOD**  
 Fluorescence **SLIGHT**  
 Inscription(s) **IGI LG783603013**

Comments: This Laboratory Grown Diamond was created by Chemical Vapor Deposition (CVD) growth process. Indications of post-growth treatment.

**ELECTRONIC COPY**



Sample Image Used



April 24, 2026  
 IGI Report Number **LG783603013**  
 ROUND BRILLIANT  
 LABORATORY GROWN DIAMOND  
 5.28 - 5.33 X 3.19 MM  
 Carat Weight **0.55 CARAT**  
 Color Grade **FANCY INTENSE BROWNISH ORANGE**  
 Clarity Grade **VVS 2**  
 Cut Grade **VERY GOOD**  
 Polish **FAIR**  
 Symmetry **GOOD**  
 Fluorescence **SLIGHT**  
 Inscription(s) **IGI LG783603013**

Comments: This Laboratory Grown Diamond was created by Chemical Vapor Deposition (CVD) growth process. Indications of post-growth treatment.



April 24, 2026  
 IGI Report Number **LG783603013**  
 ROUND BRILLIANT  
 LABORATORY GROWN DIAMOND  
 5.28 - 5.33 X 3.19 MM  
 Carat Weight **0.55 CARAT**  
 Color Grade **FANCY INTENSE BROWNISH ORANGE**  
 Clarity Grade **VVS 2**  
 Cut Grade **VERY GOOD**  
 Polish **FAIR**  
 Symmetry **GOOD**  
 Fluorescence **SLIGHT**  
 Inscription(s) **IGI LG783603013**

Comments: This Laboratory Grown Diamond was created by Chemical Vapor Deposition (CVD) growth process. Indications of post-growth treatment.



THIS DOCUMENT WAS PRODUCED WITH THE FOLLOWING SECURITY MEASURES: SPECIAL DOCUMENT PAPER, INK SCREENS, WATERMARK, BACKGROUND DESIGNS, HOLOGRAM AND OTHER SECURITY FEATURES NOT LISTED AND DO EXCEED DOCUMENT SECURITY INDUSTRY GUIDELINES.

For terms & conditions and to verify this report, please visit [www.igi.org](http://www.igi.org)