



**INTERNATIONAL
GEMOLOGICAL
INSTITUTE**

LABORATORY GROWN DIAMOND REPORT

April 24, 2026
 IGI Report Number **LG783603009**
 Description **LABORATORY GROWN DIAMOND**
 Shape and Cutting Style **ROUND BRILLIANT**
 Measurements **5.48 - 5.56 X 3.31 MM**

GRADING RESULTS

Carat Weight **0.64 CARAT**
 Color Grade **FANCY INTENSE PINK**
 Clarity Grade **VS 2**
 Cut Grade **GOOD**

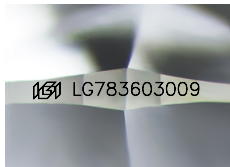
ADDITIONAL GRADING INFORMATION

Polish **FAIR**
 Symmetry **GOOD**
 Fluorescence **SLIGHT**
 Inscription(s) **IGI LG783603009**

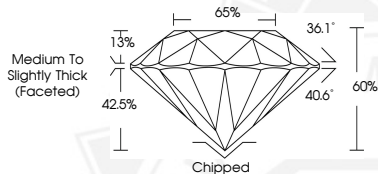
Comments: This Laboratory Grown Diamond was created by Chemical Vapor Deposition (CVD) growth process. Indications of post-growth treatment.

Secondary color: Orange

ELECTRONIC COPY



Sample Image Used



April 24, 2026

IGI Report Number **LG783603009**
ROUND BRILLIANT
LABORATORY GROWN DIAMOND
5.48 - 5.56 X 3.31 MM

Carat Weight **0.64 CARAT**
 Color Grade **FANCY INTENSE PINK**
 Clarity Grade **VS 2**
 Cut Grade **GOOD**
 Polish **FAIR**
 Symmetry **GOOD**
 Fluorescence **SLIGHT**
 Inscription(s) **IGI LG783603009**

Comments: This Laboratory Grown Diamond was created by Chemical Vapor Deposition (CVD) growth process. Indications of post-growth treatment. Secondary color: Orange



April 24, 2026

IGI Report Number **LG783603009**
ROUND BRILLIANT
LABORATORY GROWN DIAMOND
5.48 - 5.56 X 3.31 MM

Carat Weight **0.64 CARAT**
 Color Grade **FANCY INTENSE PINK**
 Clarity Grade **VS 2**
 Cut Grade **GOOD**
 Polish **FAIR**
 Symmetry **GOOD**
 Fluorescence **SLIGHT**
 Inscription(s) **IGI LG783603009**

Comments: This Laboratory Grown Diamond was created by Chemical Vapor Deposition (CVD) growth process. Indications of post-growth treatment. Secondary color: Orange



THIS DOCUMENT WAS PRODUCED WITH THE FOLLOWING SECURITY MEASURES: SPECIAL DOCUMENT PAPER, INK SCREENS, WATERMARK, BACKGROUND DESIGNS, HOLOGRAM AND OTHER SECURITY FEATURES NOT LISTED AND DO EXCEED DOCUMENT SECURITY INDUSTRY GUIDELINES.

For terms & conditions and to verify this report, please visit www.igi.org