



April 16, 2026

IGI Report Number **LG783602732**

**ROUND BRILLIANT
LABORATORY GROWN DIAMOND
5.53 - 5.58 X 3.54 MM**

Carat Weight	0.69 CARAT
Color Grade	D
Clarity Grade	VVS 2
Cut Grade	VERY GOOD
Polish	VERY GOOD
Symmetry	VERY GOOD
Fluorescence	NONE
Inscription(s)	IGI LG783602732

Comments: As Grown - No indication of post-growth treatment. This Laboratory Grown Diamond was created by High Pressure High Temperature (HPHT) growth process. Type II

LABORATORY GROWN DIAMOND REPORT

April 16, 2026	
IGI Report Number	LG783602732
Description	LABORATORY GROWN DIAMOND
Shape and Cutting Style	ROUND BRILLIANT
Measurements	5.53 - 5.58 X 3.54 MM

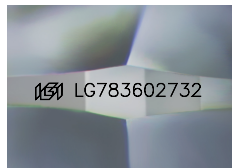
GRADING RESULTS

Carat Weight	0.69 CARAT
Color Grade	D
Clarity Grade	VVS 2
Cut Grade	VERY GOOD

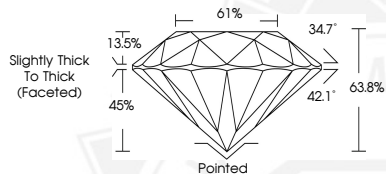
ADDITIONAL GRADING INFORMATION

Polish	VERY GOOD
Symmetry	VERY GOOD
Fluorescence	NONE
Inscription(s)	IGI LG783602732

Comments: As Grown - No indication of post-growth treatment. This Laboratory Grown Diamond was created by High Pressure High Temperature (HPHT) growth process. Type II



Sample Image Used



April 16, 2026

IGI Report Number **LG783602732**

**ROUND BRILLIANT
LABORATORY GROWN DIAMOND
5.53 - 5.58 X 3.54 MM**

Carat Weight	0.69 CARAT
Color Grade	D
Clarity Grade	VVS 2
Cut Grade	VERY GOOD
Polish	VERY GOOD
Symmetry	VERY GOOD
Fluorescence	NONE
Inscription(s)	IGI LG783602732

Comments: As Grown - No indication of post-growth treatment. This Laboratory Grown Diamond was created by High Pressure High Temperature (HPHT) growth process. Type II

THIS DOCUMENT WAS PRODUCED WITH THE FOLLOWING SECURITY MEASURES: SPECIAL DOCUMENT PAPER, INK SCREENS, WATERMARK, BACKGROUND DESIGNS, HOLOGRAM AND OTHER SECURITY FEATURES NOT LISTED AND DO EXCEED DOCUMENT SECURITY INDUSTRY GUIDELINES.

For terms & conditions and to verify this report, please visit www.igi.org