



**INTERNATIONAL
GEMOLOGICAL
INSTITUTE**

ELECTRONIC COPY



April 8, 2026

IGI Report Number LG783602264
ROUND BRILLIANT
LABORATORY GROWN DIAMOND
4.15 - 4.19 X 2.51 MM

Carat Weight 0.27 CARAT
Color Grade D
Clarity Grade VVS 2
Cut Grade VERY GOOD
Polish VERY GOOD
Symmetry GOOD
Fluorescence NONE
Inscription(s) IGI LG783602264

Comments: As Grown - No indication of post-growth treatment. This Laboratory Grown Diamond was created by High Pressure High Temperature (HPHT) growth process. Type II

LABORATORY GROWN DIAMOND REPORT

April 8, 2026
IGI Report Number **LG783602264**
Description **LABORATORY GROWN DIAMOND**
Shape and Cutting Style **ROUND BRILLIANT**
Measurements **4.15 - 4.19 X 2.51 MM**

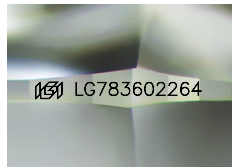
GRADING RESULTS

Carat Weight 0.27 CARAT
Color Grade D
Clarity Grade VVS 2
Cut Grade VERY GOOD

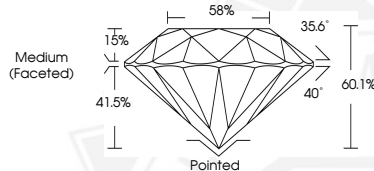
ADDITIONAL GRADING INFORMATION

Polish VERY GOOD
Symmetry GOOD
Fluorescence NONE
Inscription(s) IGI LG783602264

Comments: As Grown - No indication of post-growth treatment. This Laboratory Grown Diamond was created by High Pressure High Temperature (HPHT) growth process. Type II



Sample Image Used



April 8, 2026

IGI Report Number LG783602264
ROUND BRILLIANT
LABORATORY GROWN DIAMOND
4.15 - 4.19 X 2.51 MM

Carat Weight 0.27 CARAT
Color Grade D
Clarity Grade VVS 2
Cut Grade VERY GOOD
Polish VERY GOOD
Symmetry GOOD
Fluorescence NONE
Inscription(s) IGI LG783602264

Comments: As Grown - No indication of post-growth treatment. This Laboratory Grown Diamond was created by High Pressure High Temperature (HPHT) growth process. Type II



THIS DOCUMENT WAS PRODUCED WITH THE FOLLOWING SECURITY MEASURES: SPECIAL DOCUMENT PAPER, INK SCREENS, WATERMARK, BACKGROUND DESIGNS, HOLOGRAM AND OTHER SECURITY FEATURES NOT LISTED AND DO EXCEED DOCUMENT SECURITY INDUSTRY GUIDELINES.

For terms & conditions and to verify this report, please visit www.igi.org