



April 8, 2026

IGI Report Number **LG783602248**

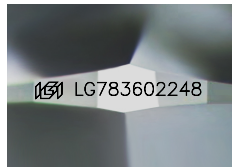
**ROUND BRILLIANT
LABORATORY GROWN DIAMOND
3.62 - 3.65 X 2.29 MM**

Carat Weight	0.19 CARAT
Color Grade	E
Clarity Grade	VVS 2
Cut Grade	VERY GOOD
Polish	VERY GOOD
Symmetry	VERY GOOD
Fluorescence	NONE
Inscription(s)	IGI LG783602248

Comments: This Laboratory Grown Diamond was created by Chemical Vapor Deposition (CVD) growth process. Type IIa

LABORATORY GROWN DIAMOND REPORT

April 8, 2026	
IGI Report Number	LG783602248
Description	LABORATORY GROWN DIAMOND
Shape and Cutting Style	ROUND BRILLIANT
Measurements	3.62 - 3.65 X 2.29 MM



Sample Image Used

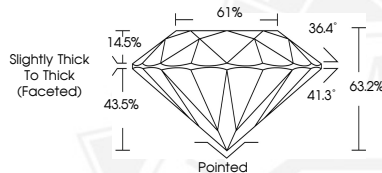
GRADING RESULTS

Carat Weight	0.19 CARAT
Color Grade	E
Clarity Grade	VVS 2
Cut Grade	VERY GOOD

ADDITIONAL GRADING INFORMATION

Polish	VERY GOOD
Symmetry	VERY GOOD
Fluorescence	NONE
Inscription(s)	IGI LG783602248

Comments: This Laboratory Grown Diamond was created by Chemical Vapor Deposition (CVD) growth process. Type IIa



April 8, 2026

IGI Report Number **LG783602248**

**ROUND BRILLIANT
LABORATORY GROWN DIAMOND
3.62 - 3.65 X 2.29 MM**

Carat Weight	0.19 CARAT
Color Grade	E
Clarity Grade	VVS 2
Cut Grade	VERY GOOD
Polish	VERY GOOD
Symmetry	VERY GOOD
Fluorescence	NONE
Inscription(s)	IGI LG783602248

Comments: This Laboratory Grown Diamond was created by Chemical Vapor Deposition (CVD) growth process. Type IIa



THIS DOCUMENT WAS PRODUCED WITH THE FOLLOWING SECURITY MEASURES: SPECIAL DOCUMENT PAPER, INK SCREENS, WATERMARK, BACKGROUND DESIGNS, HOLOGRAM AND OTHER SECURITY FEATURES NOT LISTED AND DO EXCEED DOCUMENT SECURITY INDUSTRY GUIDELINES.